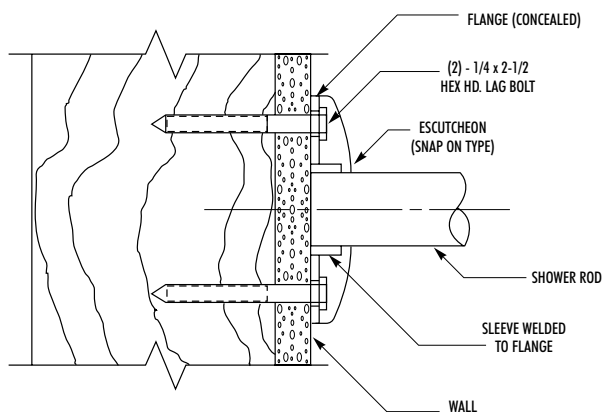
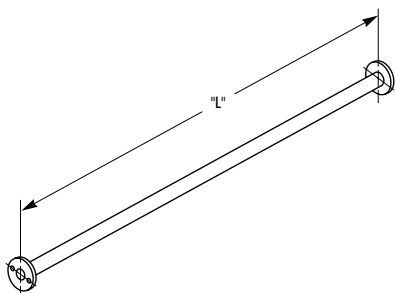


**MODEL 9538
9539**

SHOWER CURTAIN ROD

- Concealed Mounting
- Model 9538 – 1" O.D. **Bradex™**
36", 42", 48", 60", 72"
- Model 9539 – 1-1/4" O.D. **Bradex™**
36", 42", 48", 60", 72"



CONSTRUCTION:

- **FLANGES** fabricated of glass polypropylene, 3-1/8" dia. Shower rod support sleeves formed with flange as one piece.
- **ESCUTCHEONS** of type 304 (18-8), 20 gauge stainless steel. One piece drawn construction with exposed surfaces in architectural satin finish. Snap over flanges to conceal mounting screws.
- **TUBING** of type 304 (18-8), 18 gauge stainless steel, seamless construction with exposed surfaces in architectural satin finish.

INSTALLATION:

To properly engage rod in support sleeves, rod length must be no less than approximately 1/4" shorter than wall opening. Secure one flange to wall with mounting screws (included) at holes provided. Align mounting holes vertically. Slip opposite flange and both escutcheons into place. Secure flange to wall and snap escutcheons over mounting flanges.

OPTIONAL FEATURES:

Feature	Suffix
<input type="checkbox"/> Bright polished finish	-4

GUIDE SPECIFICATION:

Concealed mounted shower rod shall be fabricated of type 304 (18-8), 18 gauge stainless steel of seamless construction. Mounting flanges shall be of glass polypropylene with snap-on vandal-resistant protective escutcheons.

Concealed Mounted Shower Rod shall be Bradley Model 9538 (9539)- _____ " (specify length).