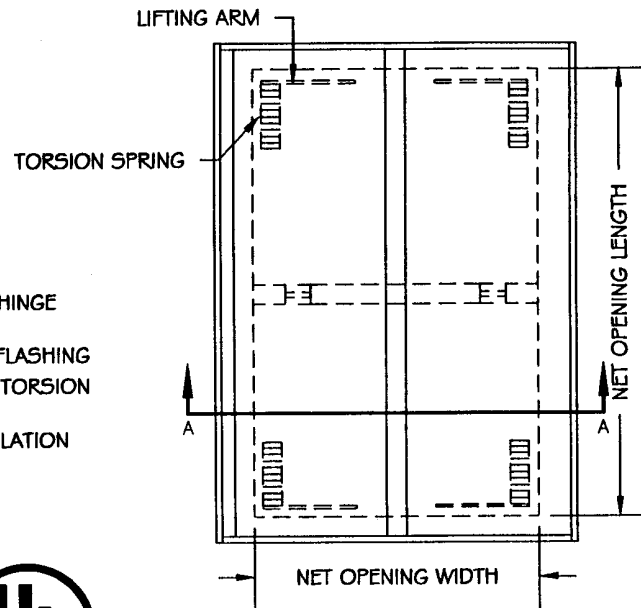


SMOKE VENT



OPTIONAL CONSTRUCTION

- ALL ALUMINUM CONSTRUCTION
- INTEGRAL FACTORY INSULATED CURB WITH METAL LINER
- CURB MOUNT BASE FOR MOUNTING ON SEPARATE CURB
- ELECTRO-MECHANICAL-THERMAL ACTIVATED LINK
- ALUMINUM DOORS WITH GALVANIZED STEEL CURB
- METAL BUILDING CURB BASE TO FIT ANY STANDING SEAM OR RIB PANEL ROOF
- MULTIPLE UNIT RUNS WITH SPLICE FOR CONTINUOUS OPENINGS

STANDARD CONSTRUCTION:

- GALVANIZED STEEL DOORS AND CURBS WITH FACTORY APPLIED FINISH COAT
- INTEGRAL 1 3" HIGH SHELF FLASHING CURB
- INSULATED DOORS WITH METAL LINER
- TORSION SPRING OPERATORS (OPENS AGAINST 10LBS PSF LOAD)
- HYDRAULIC SHOCK ABSORBERS
- HOLD DOWN LATCHES (PREVENTS DOORS FROM OPENING AGAINST 30LBS PSF UPLIFT)
- FMUL APPROVED 165 DEGREE FUSIBLE LINK
- NEOPRENE GASKETING AND CENTER CHANNEL
- FOR WEATHER PROOF CONSTRUCTION INSIDE/OUTSIDE PULL RINGS FOR
- MANUAL WITHOUT DISTURBING FUSIBLE LINK OPERATION
- AUTOMATIC LOCKING HOLD OPEN ARMS
- CORROSION RESISTANT ZINC PLATED HARDWARE

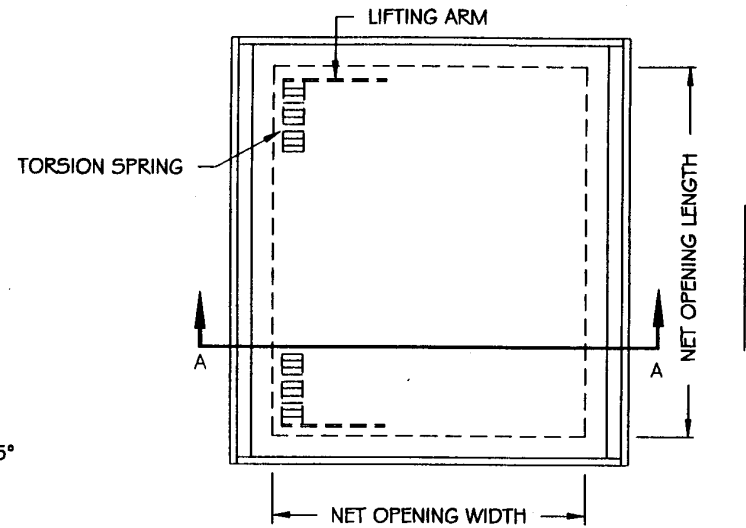
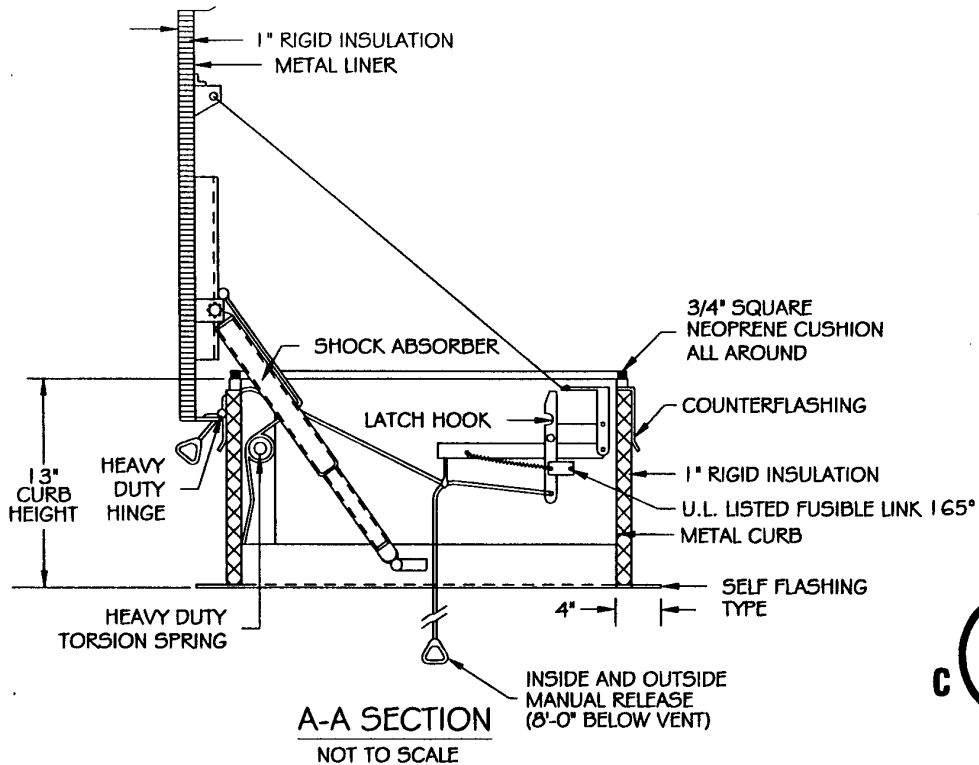
Distributed by:

AmeraProducts, Inc.
 Tele: 1-800-608-6568
 Fax: (409) 842-5852
 Email: Info@ameraproducts.com

www.Smokevents.com

Manufactured by Cierra Products

| TYPE: | MATERIAL: | COVER: | COVER LINER: | CURB/ CURB LINER: |
|-------------------------------------|-----------------------|--------|--------------|----------------------|
| <input type="checkbox"/> SVG(SIZE)D | GALV. (PAINT BOND) | 18 GA | 20 GA. | 14 GA. |
| <input type="checkbox"/> SVA(SIZE)D | ALUMINUM | 12 GA | 11 GA. | 11 GA. |
| DATE: 12/31/98 | PROJECT: | | | |
| SCALE: NONE | CONTRACTOR: | | | |
| DRAWN BY: CMR | ARCHITECT: | | | |
| QUANTITY: | DIRECTORY: | | | |



PLAN VIEW
NOT TO SCALE

OPTIONAL CONSTRUCTION

- ALL ALUMINUM CONSTRUCTION
- INTEGRAL FACTORY INSULATED CURB WITH METAL LINER
- CURB MOUNT BASE FOR MOUNTING ON SEPARATE CURB
- ELECTRO-MECHANICAL-THERMAL ACTIVATED LINK
- ALUMINUM DOORS WITH GALVANIZED STEEL CURB
- METAL BUILDING CURB BASE TO FIT ANY STANDING SEAM OR RIB PANEL ROOF
- MULTIPLE UNIT RUNS WITH SPLICE FOR CONTINUOUS OPENINGS

STANDARD CONSTRUCTION:

- GALVANIZED STEEL DOORS AND CURBS WITH FACTORY APPLIED FINISH COAT
- INTEGRAL 13" HIGH SHELF FLASHING CURB
- INSULATED DOORS WITH METAL LINER
- TORSION SPRING OPERATORS (OPENS AGAINST 10LBS PSF LOAD)
- HYDRAULIC SHOCK ABSORBERS
- HOLD DOWN LATCHES (PREVENTS DOORS FROM OPENING AGAINST 30LBS PSF UPLIFT)
- FM/UL APPROVED 165 DEGREE FUSIBLE LINK
- NEOPRENE GASKETING AND CENTER CHANNEL
- FOR WEATHER PROOF CONSTRUCTION INSIDE/OUTSIDE PULL RINGS FOR MANUAL WITHOUT DISTURBING FUSIBLE LINK OPERATION
- AUTOMATIC LOCKING HOLD OPEN ARMS
- CORROSION RESISTANT ZINC PLATED HARDWARE

Distributed by:

AmeraProducts, Inc. www.Smokevents.com
 Tele: 1-800-608-6568
 Fax: (409) 842-5852
 Email: Info@ameraproducts.com

Manufactured by Cierra Products

| | <u>TYPE:</u> | <u>MATERIAL:</u> | <u>COVER:</u> | <u>COVER LINER:</u> | <u>CURB/ CURB LINER:</u> |
|----------------|--------------|-----------------------|---------------|---------------------|------------------------------|
| SVG(SIZE) | | GALV. (PAINT BOND) | 18 GA | 20 GA. | 14 GA. |
| SVA(SIZE) | | ALUMINUM | 12 GA | 11 GA. | 11 GA. |
| DATE: 12/31/98 | PROJECT: | | | | |
| SCALE: NONE | CONTRACTOR: | | | | |
| DRAWN BY: CMR | ARCHITECT: | | | | |
| QUANTITY: | DIRECTORY: | | | | |