



What Makes Our Products Different?

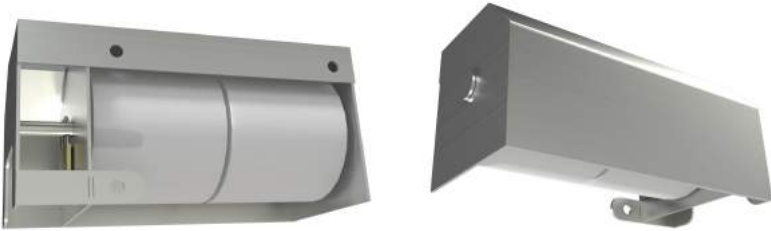
There are many "Anti Vandal" products on the market but none come close to matching all of the features of Atlas American heavy duty restroom fixtures. From Warranty, Design, Material, Mounting, Paper Flexibility and being Made in the USA; feature for feature there is no better product. **"Simple, Rugged and Reliable!"**

Best Warranty

We are so confident in our products when properly installed and secured that we offer an industry leading **10 Year Vandalism Warranty**

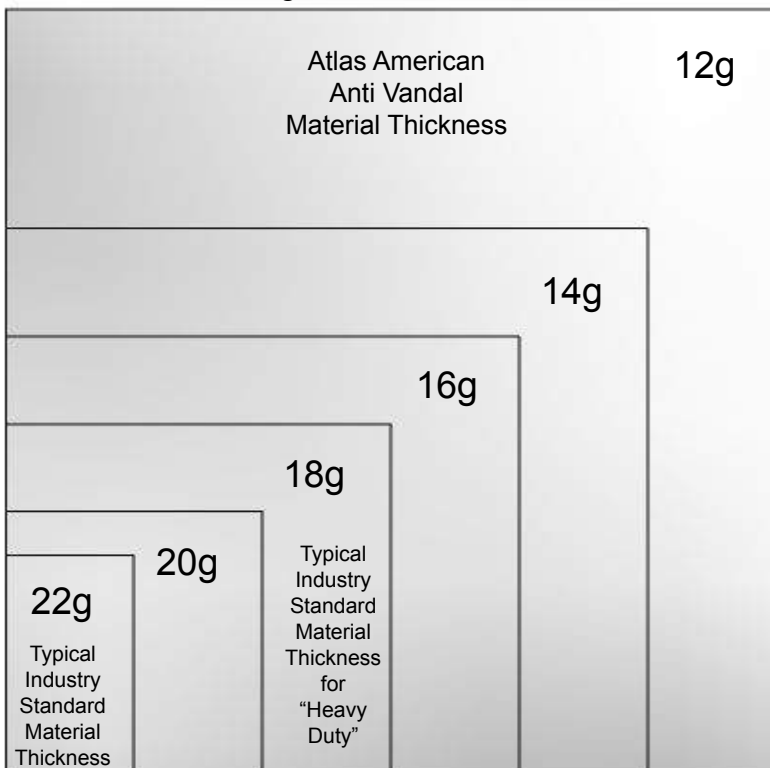
Anti-Vandal by Design

Security comes by a good design. One feature of Atlas American products is the protected lock design to prevent vandals and thieves from easily compromising the lock and removing your costly paper products.



Thicker Material

The distinguishing feature of our products is the 12 gauge stainless steel material used. It is 3.5 times thicker than the industry standard and over 2 times the thickness of other "vandal resistant" products on the market. 12 gauge is difficult to manufacture in but it is unmatched in strength.



American Made

Atlas American is a small family owned business that includes 3 generations of Military Veterans. Because of our heritage, we are proud that all of our products are Made in the USA with American sourced Stainless Steel.



Better Mounting

Our products are specified to be mounted with industry leading 3/8" diameter mounting hardware. The difference in strength is apparent from the image below. Once properly mounted into concrete walls or drywall with 3/4" backing, our products will stand up to use, abuse and vandals.

Standard Industry Mounting Hardware: #8 Metal Screws



Atlas American Standard Mounting Hardware: 3/8" 3" Lag Screw

Paper Flexity

We believe in offering you the flexibility to choose your paper products that work for you. Save money month after month by freeing your facilities from locked-in paper supply contracts, while also providing the best double deterrent against vandal theft and vandal damage.

