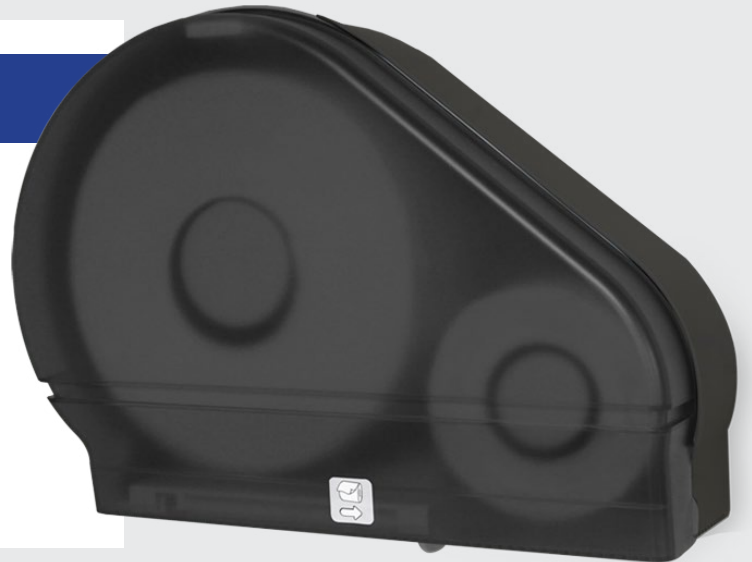


Single 9" Jumbo Tissue w/ Stub Roll

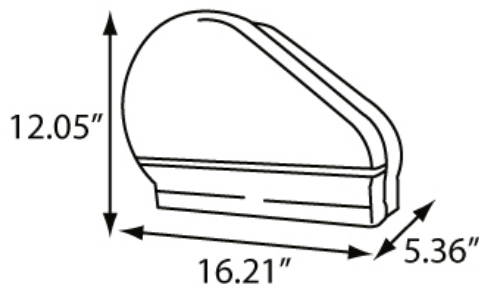
Product Overview

The RD0024 Single 9" Jumbo Tissue Dispenser with Stub is easy to use and install. The dispenser has a sliding panel which ensures the use of only one roll at a time. Designed for use with any universal 9" jumbo tissue roll.



Product Features:

- Small, compact design
- Sliding panel ensures the use of one roll at a time
- Double-latch lock prevents waste
- Translucent cover allows for easy view of paper
- 2 1/4" core, also includes a 3 3/8" adaptor
- ADA Compliant



More information and images available online.

MODEL #	COLOR
RD0024-02F	BLACK TRANSLUCENT 02
RD0024-03F	WHITE TRANSLUCENT 03

Specifications:   

Dimensions (in)	16.21" w x 12.05" h x 5.36" d
Weight (lb)	2.60 lb
Key Type	1
Capacity	9" Jumbo Tissue + Stub
Case Pack	4 (3.08' ³)
Pallet Qty	96 units



Distributed by
www.Ameraproducts.com

Phone: (800) 608-6568
Fax: (409) 840-5545
info@ameraproducts.com