



# Child Seating Solutions

Featuring New Models and Classic Favorites

Distributed by  
[www.AmeraProducts.com](http://www.AmeraProducts.com)  
Phone: (800) 608-6548  
Fax: (409) 840-3542  
[info@ameraproducts.com](mailto:info@ameraproducts.com)



We Care For Kids.



# Koala Kare: The Trusted Brand for Child Accommodation Products



## Our Brand Promise

Helping operators of public establishments equip their operations to accommodate the needs of caregivers and their children is what Koala Kare Products is all about. We're proud to be the world's leading provider of safe, innovative and durable commercial childcare products for over 25 years.

Koala's familiar "Parent and Child" landmark is a comfort to families and a promise of thoughtful accommodation wherever it appears.

## Koala Products Can Help Your Bottom Line

Koala Kare child accommodations are known to please families—and they also can satisfy your bottom line. Third-party research indicates that parents are more loyal, visit more often, and spend more money at establishments that provide high quality, well-maintained child accommodation amenities.

### HIGH CHAIRS

- 4.....High Chair Standard
- 5.....High Chair Compliance
- 6.....Koala Stowe™ KB615
- 8.....Designer KB105
- 10.....Infant Seat Kradle KB115
- 11.....ECO KB833
- 12.....KidSitter® KB966 (Brown) / KB977 (Gray)
- 13.....Diner Chair KB950

### BOOSTERS

- 14.....Introduction to Booster Seats
- 15.....Booster Seat Standard
- 16.....Restaurant Booster KB854-S/KB855-S
- 17.....Booster Buddy KB116-S/KB117-S
- 18.....BoosterChair KB327
- 19.....Cinema Seat KB424/KB425

Back Cover..... Maintenance and Replacement Parts



## SAFETY FIRST

### Your Customers Will Thank You

Koala Kare is committed to being an innovator in child accommodations, and safety is our highest priority.

Replacement parts are available for all products to help keep them in good working order.



Distributed by  
[www.Ameraproducts.com](http://www.Ameraproducts.com)  
Phone: (800) 608-6568  
Fax: (409) 840-3541  
[info@ameraproducts.com](mailto:info@ameraproducts.com)

# Compliance is Key

## High Chair Standards Are Reaching New Heights

A new federal standard (ASTM F404-18) to improve the safety of all high chairs—both in restaurants and at home—was approved by the Consumer Product Safety Commission and took effect on June 19, 2019.

## DID YOU KNOW?

# 70%

of parents are more likely to visit businesses with high chairs.

*The following are part of the new safety requirements:*

Warning labels about tipping hazards

Active three-point restraint system

Passive crotch restraint system

Rearward stability to prevent chairs from tipping backward



Designer High Chair KB105-02

Distributed by  
[www.Ameraproducts.com](http://www.Ameraproducts.com)  
Phone: (800) 608-6548  
FAX: (409) 840-5541  
[info@ameraproducts.com](mailto:info@ameraproducts.com)



# Are your Chairs Compliant?

**Koala Kare is committed to safety and compliance. All of our high chairs are compliant with the ASTM F404-18 standard.**

Restaurant owners and managers who want to ensure they are complying with the new requirements and providing the safest child seating options possible for patrons should plan to do the following:

- Conduct an audit of your current high chair inventory to determine your need for compliant chairs.
- Work with a Koala Kare representative to determine if your current chairs meet the new standard.



Diner High  
Chair Tray  
KB851-02



KidSitter  
KB977-04



*Have you inspected  
the high chairs in your  
establishment recently?*

Distributed by  
[www.Ameraproducts.com](http://www.Ameraproducts.com)  
Phone: (800) 608-6548  
Fax: (409) 840-5545  
[info@ameraproducts.com](mailto:info@ameraproducts.com)

# Koala Stowe™ KB615



Introducing the Koala Stowe™, our newest high chair, offering a sleek, contemporary design that will complement any restaurant setting. The table height design allows children to eat off of a standard restaurant table with the whole family. Constructed of beechwood and plastic, this chair is durable and easy-to-clean.

## Product Details:

- Modern design easily integrates into any restaurant setting
- Secure three-point nylon crotch restraint system
- Innovative, flat-fold design for easy storage and space savings
- Saves time as this product is easy to clean and maintain
- ASTM Compliant



Foldable high  
chair is a  
space saver

Distributed by  
[www.Ameraproducts.com](http://www.Ameraproducts.com)  
Phone: (800) 608-6548  
Fax: (409) 640-5542  
[info@ameraproducts.com](mailto:info@ameraproducts.com)



## NEW PRODUCT!

The compact, fold up design of the Koala Stowe™ makes it easy to maneuver around the dining room. The legs click to lock in place, assuring your patrons the chair is secure. When it's time to store this chair, press latches to fold it up and lean it flat against the wall for compact space saving.

Smooth plastic surface is easy to clean

Intuitive latch for opening and closing the high chair.



Koala Stowe™ is designed to meet stability standards set forth in ASTM-F404-18

Solid beechwood legs are naturally shock absorbent and chip resistant.

## A CLOSER LOOK



Active three-point nylon restraint system keeps child safely in place.



Press latches to disengage lock pins to allow the chair to be folded-up for storage.



Handbar and leg hole design provides child comfort.

### Dimensions:

Seat Height: 19.75" (502mm)

Opened: 18" W x 27.5" H x 21" D  
(457mm x 699mm x 533mm)

Folded: 18" W x 31.5" H x 7.5" D  
(457mm x 800mm x 178mm)

### Shipping Weight:

14 lbs (6.4 kg)

### Colors:

Black 02



# Designer KB105



KB105-03

Sleek design and color choices match modern restaurant design and décor. Curved chair top reduces potential liability by preventing chair from being turned upside down and used unsafely to balance an infant carrier. Table-height chair allows a seated child to eat off a standard restaurant table with the whole family.

## Product Details:

- Modern design and appealing color palette integrates into a variety of restaurant decors
- Saves time as this chair is easy to clean and maintain
- Available assembled (KB105) or unassembled (KB105-KD)
- ASTM and EN Compliant
- TUV Certified



KB105-01



Constructed of seamless, solid HDPE plastic, which is more durable and sanitary than standard wood high chairs. Textured surface resists scuffing, chipping and scratching. The solid design eliminates crevices or cracks for food to get caught in and cuts down on cleaning time. Chair has a small footprint in the dining area and can be stacked up to four high for space savings.

Chairs stack as many as four high for easy storage and space saving.



KB105-02

## A CLOSER LOOK



*Passive crotch restraint system and three point harness keeps child safely in place.*



*Curved design prevents chair from being used upside-down as an unsafe resting place for infant carriers.*



*Integrated handles makes this chair easy to maneuver around the dining room*

### Dimensions:

16¾" W x 29½" H x 21¾" D  
(425 x 749 x 553 mm)

### Shipping Weight:

18 lbs (8 kg)

### Colors:



Grey 01   Black 02   Red 03   Brown 09

U.S. Patent Nos. 7552974, D546081  
Canadian Patent No. CA 2559004  
Registered Community Design  
494430-0001

**DID YOU  
KNOW?**

**60%** of parents use  
high chairs most  
or all of the time.

# Infant Seat Kradle KB115

Distributed by  
www.Ameraproducts.com  
Phone: (800) 608-6548  
Fax: (409) 840-5542  
info@ameraproducts.com

## A CLOSER LOOK



*Safe and easy operation in three steps.*



*Tubular steel legs with reinforced cables for strength and durability.*



*Nylon safety strap holds infant car seat securely in place.*

Build loyalty among your patrons by providing accommodations for even your youngest guests. Our Infant Seat Kradle safely holds an infant carrier at table height. The unique design reduces potential liability by eliminating the unsafe act of balancing an infant carrier on an upside-down high chair. This model features tubular steel legs with reinforced cables for strength and durability and easily folds to compact size for storage.

### Product Details:

- Safety strap to secure the infant carrier to the kradle
- Compact fold up design for easy storage and space savings
- Removable mesh netting can be machine washed and reinstalled

*ASTM F404-18 does not apply to this product*



### Dimensions:

25½" W x 30" H x 21" D  
(648 x 762 x 533 mm)

### Shipping Weight:

13 lbs (5.9 kg)

### Colors:



Black 02



Brown 09



Blue/White 99



# ECO KB833

Distributed by  
www.Ameraproducts.com  
Phone: (800) 608-6548  
Fax: (409) 840-5545  
info@ameraproducts.com

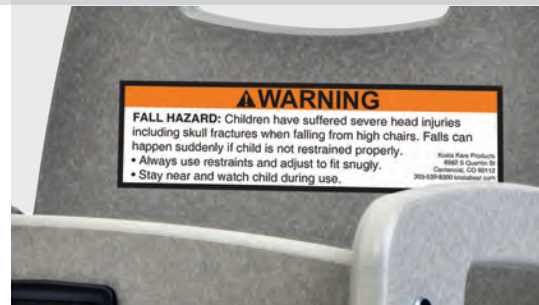
## A CLOSER LOOK



Passive crotch restraint system and three point harness keeps child safely in place.



Integrated handles makes this chair easy to maneuver around the dining room



Visible warning label for compliance with ASTM F404-18 standard.

The name of our ECO Chair truly speaks for itself — this chair is manufactured from 100% post-consumer plastic, and its smooth surfaces allow for quick cleaning. The ECO sits at table height. This low-maintenance model is perfect for high-traffic establishments.

## Product Details:

- Made of 100% post-consumer plastic
- Saves time as this chair is easy to clean and maintain
- Available assembled (KB833) or unassembled (KB833-KD)
- ASTM Compliant



KB833-01



## Dimensions:

16½" W x 30¼" H x 23¼" D  
(419 x 768 x 591 mm)

## Shipping Weight:

15 lbs (6.8 kg)

## Colors:



Grey 01 Black 02 Brown 09

# KidSitter KB966 (Brown)/KB977 (Grey)



## A CLOSER LOOK



Diagram helps guests safely convert high chair to an infant seat cradle.



Safety strap secures infant carrier in place.



Diagram indicates direction infant seat carrier should be placed into the KidSitter.

KB977-04

The KidSitter is the ultimate 2-in-1 child accommodation solution. This good-looking, hard-working product can be used as a high chair or converted to an infant seat cradle in three easy steps. It can then be quickly and easily converted back to a high chair for your next guest.

## Product Details:

- Quickly and easily converts from a high chair to infant seat cradle
- Saves time as this chair is easy to clean and maintain
- Stackable up to three high for easy storage and space savings
- ASTM and EN Compliant



KB966-09



## Dimensions:

24¼" W x 27" H x 22½" D  
(616 x 686 x 572mm)

## Shipping Weight:

14 lbs (6.4 kg)

## Colors:



When ordering, indicate leg color KB966 (brown) or KB977 (grey) followed by the 2-digit suffix for your choice of seat color.



# Diner Chair KB950

Distributed by  
www.Ameraproducts.com  
Phone: (800) 608-6568  
Fax: (409) 840-3542  
info@ameraproducts.com



KB950-09

The Diner Chair is a restaurant staple with its updated design on the traditional plastic high chair. Durable construction provides long lasting use. Color choices quietly integrate this chair into many different restaurant settings. Clean lines and smooth surfaces make for quick and easy cleaning.

## Product Details:

- Integrated handle makes this chair easy to maneuver around the dining room
- Stackable up to four high for easy storage and space savings
- Saves time as this product is easy to clean and maintain
- ASTM compliant tray (KB851) accommodates different feeding needs.
- Available assembled (KB950) or unassembled (KB950-KD)
- ASTM and EN Compliant



KB950-01

## A CLOSER LOOK



Passive crotch restraint system provides added safety.



Active three-point restraint system keeps child safely secured.



Visible warning label for compliance with ASTM F404-18 standard.

## Dimensions:

22¼" W x 30¼" H x 23½" D  
(565 x 743 x 549 mm)

## Shipping Weight:

14.5 lbs (6.6 kg)

## Colors:

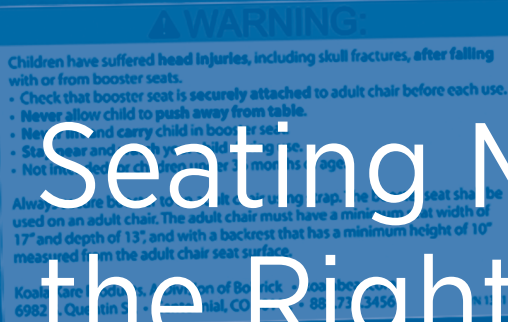


Grey 01



Brown 09

# Safe Seating Matters: Find the Right Fit with Koala Kare



Our research shows that restaurants and commercial establishments that provide proper child accommodations can earn repeat business from families with children.

Koala Kare offers a wide variety of booster seats for young customers that have grown out of our high chairs. Choose from a variety of colors and styles to meet the needs of patrons visiting restaurants, movie theatres, auditoriums, stadiums and other entertainment venues. Make sure all your young visitors have the best seat in your establishment.

## DID YOU KNOW?

**90%**

of parents visit public places with their child once a week

**75%**

of parents seek out establishments with child accommodations most or all of the time



KB117-03S



# BOOSTING STANDARDS FOR BOOSTER SEATS

## Get ahead of the safety curve with our updated booster seats

The Consumer Product Safety Commission (CPSC) passed a new federal standard (ASTM F2640-18) to improve the safety of all booster seats. The standard seeks to minimize the risks associated with the use of booster seats, including those related to infant falls, entrapment or structural and design problems.

*Koala boosters are designed for use by children at least three years of age.*

**At Koala Kare, we take our commitment to safety and compliance seriously. Our Booster Buddy, Restaurant Booster and BoosterChair comply with the \*ASTM F2640-18 standard.**

*\*This ASTM standard does not apply to Cinema Seat.*



### *The following are part of the new safety requirements for all boosters:*

#### 1. A visible safety warning label



Restaurant Booster KB854-01S

2. Ability to be attached to an adult chair
3. Product registration to be alerted to possible recalls
4. Labeling requirements about the adult chair dimensions are required on the product packaging and warning label
5. Koala's booster seats are age graded for 36 months up to 5 years of age
6. Boosters are required to be at least 0.8" in width and 0.4" in depth LESS than the adult chair seating surface. The height of the strap attachment needs to be at least 3.9" less than the height of the adult chair's backrest.

# Restaurant Booster KB854-S/KB855-S



KB854-09S

The Restaurant Booster features two different height options to accommodate children of various ages and sizes. This seat stacks easily for convenient storage and space savings when not in use. Its smooth, polyethylene construction is durable and easy to clean, making it a great choice for high-traffic establishments.

## Product Details:

- Saves time as there are no crevices or cracks to collect food or dirt
- Strap fastens booster securely to an adult chair
- Available as a 1-pack (KB854-S) or 4-pack (KB855-S)
- ASTM Compliant



KB854-04S

## A CLOSER LOOK



*Strap safely fastens to adult chair.*



*Booster seat can be used on either side depending on the need of the patron.*



*Stacks neatly for easy storage.*

## Dimensions:

15½" W x 7⅞" H x 12¼" D  
(394 x 200 x 311 mm)

## Shipping Weight:

KB854-S: 1- pack 5 lbs (2.3 kg)  
KB855-S: 4- pack 17 lbs (7.7 kg)

## Colors:



Grey 01



Blue 04



Brown 09





# Booster Buddy KB116-S/KB117-S



KB117-02S

The Booster Buddy is designed to help little ones enjoy any experience and is a great addition to restaurants, theatres and beauty salons. The seamless polyethylene seat is durable for long lasting use. Features built-in snack and cup holders and an easy-carry handle for portability. Dual seating sides offer a 6" lift on one side and a 4" lift on the other to accommodate a wide range of ages.

## Product Details:

- Integrated easy-carry handle makes this product very portable
- Features dual height options to accommodate a variety of ages and sizes
- Available as a 2-pack (KB117-S) or 5-pack (KB116-S)
- ASTM Compliant



KB117-03S

## A CLOSER LOOK



Features built in cup and snack holders.



Safety strap fastens securely to adult chair.



Easy carry handle

## Dimensions:

16¼" W x 7½" H x 11½" D  
(413 x 191 x 292mm)

## Shipping Weight:

KB116: 5- pack 18 lbs (8 kg)  
KB117 2- pack 7 lbs (3 kg)

## Colors:



Black 02   Red 03   Blue 04



# BoosterChair KB327

Distributed by  
www.Ameraproducts.com  
Phone: (800) 608-6548  
Fax: (407) 840-3342  
info@ameraproducts.com



KB327-09

The BoosterChair's ergonomic design offers increased child comfort with a smooth contoured shape, rounded seat back and arm rests. Sleek and stylish, the BoosterChair is the companion booster to our Designer Chair and makes a great option for any modern dining setting.

## Product Details:

- Ergonomic design for increased comfort
- Microban® antimicrobial protection inhibits the growth of stain and odor causing bacteria
- Can be stacked tidily for compact storage.
- Saves time as the smooth surface is easy to clean and maintain
- KB327 BoosterChairs are sold as a 2-pack
- ASTM Compliant



KB327-09

## A CLOSER LOOK



Rear strap securely fastens to adult chair for safety.



Chairs are stackable for easy storage.

## Dimensions:

13" W x 9½" H x 12" D  
(330 x 241 x 305 mm)

## Shipping Weight:

6 lbs (2.7 kg)

## Colors:



Black 02    Brown 09



# Cinema Seat KB424/KB425



KB425-04

Koala Kare's Cinema Seat is specially designed for theatres, arenas and auditoriums. The contoured seat provides a comfortable experience and the large seating surface can accommodate a variety of ages and sizes. Cinema Seats are constructed of seamless plastic with rounded corners. Molded-in resistance ribs provide stability by gripping the seating surface without damaging the seat underneath.

## Product Details:

- Saves time as seamless plastic is easy to clean
- Designed specifically for theatres, arenas and auditoriums
- Includes 36 booster seats and rolling cart for easy storage (KB424)
- Also available as a 1-pack (KB425)

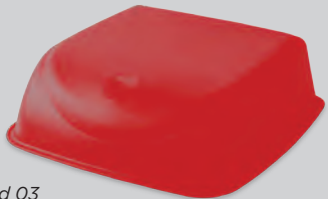


KB424-04

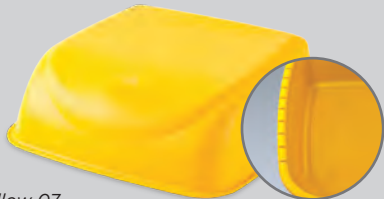
ASTM F2640-18 does not apply to this product

## A CLOSER LOOK

A rainbow of color options allow little patrons to pick their favorite.

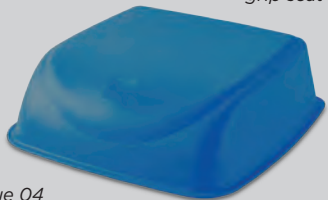


Red 03

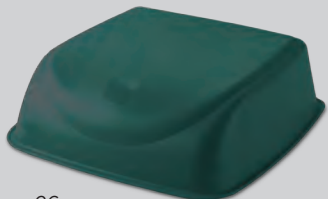


Yellow 07

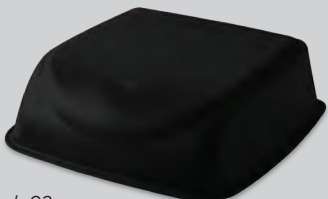
Resistance ribs grip seat surface



Blue 04



Green 06



Black 02

## Dimensions:

16" D x 16½" W x 5" H  
 (419 x 768 x 591 mm)

## Shipping Weight:

72 lbs (32.6 kg)

## Colors:

Black 02, Red 03, Blue 04,  
 Green 06, Yellow 07,  
 Assorted 19

## DID YOU KNOW?

NEARLY **8 in 10**

parents are not satisfied with the high chairs provided by restaurants.

## Proper Maintenance Pays Off

Parents have loyalty to establishments that provide clean, safe child accommodation products. Keep families coming back by making sure your high chairs and booster seats are properly maintained.

Inspect your high chairs and booster seats on a regular basis to ensure they are functioning correctly and no parts need replacing. Straps should be replaced if the webbing is cut or frayed and buckles need to be replaced if they are broken or will not fasten properly.

### Keep Your High Chairs in Good Working Order

A properly maintained high chair has three ends of a functioning, non-frayed strap. A properly working buckle clicks when closed and is attached at all ends on seat bottom. A well-maintained high chair has a non-frayed crotch strap firmly attached to both the safety bar and seat bottom and an intact warning label affixed to the seat back. If the warning label is damaged or unreadable, please replace it. All plastic parts must be firmly attached by provided hardware, and should be tightened as necessary.

### Cleaning Tips

Koala recommends cleaning and disinfecting all high chair and booster seat surfaces daily. Surfaces should be wiped down and cleaned of all debris first and then disinfected.

**Do not use bleach** as the disinfectant as it may cause discoloration and will void the warranty. Do not use abrasive cleansers as they may scratch the product.

We recommend using a microfiber rag for loosening and removing soil in our textured surfaces. Microfiber rags capture 25-35 percent more soil than traditional

terry cloth rags. After use, all microfiber rags should be thoroughly washed via a cleaning service or washer/dryer. After cleaning, all surfaces should feel smooth and be free of visible soil.

### Make Sure You Register Your Products

It is important that you complete the Consumer Product Safety Commission's product registration card to improve the effectiveness and response rates for possible recalls. Product registration cards are required to ship with the product and will provide the option to register online or by mail.

## Replacement Parts

**Regularly inspect your Koala Kare seating products and replace broken or missing parts. To help keep your Koala products in good working order, replacement parts are available from your preferred distributor.**

## Koala Kare Color Options

Koala Kare seating products come in a variety of colors to match decor. Refer to each product for standard colors. Please use two-digit color suffix following model number when ordering.

			
Grey 01	Black 02	Red 03	Blue 04
			
Green 06	Yellow 07	Brown 09	Blue/White 99



Koala Kare Products  
6982 S. Quentin Street  
Centennial, CO 80112

