



# HIGH SECURITY ACCESS DOOR

Model DSB-123SD

For All Types of Construction



**KARP ASSOCIATES, INC.**  
54-54 43rd Street, Maspeth, NY 11378

DATE

## SPECIFICATIONS

### GENERAL SCOPE:

Access doors shall be Karp Type DSB-123SD as manufactured by Karp Associates, Inc., N.Y. Sizes shall be as indicated on the drawings.

### CONSTRUCTION:

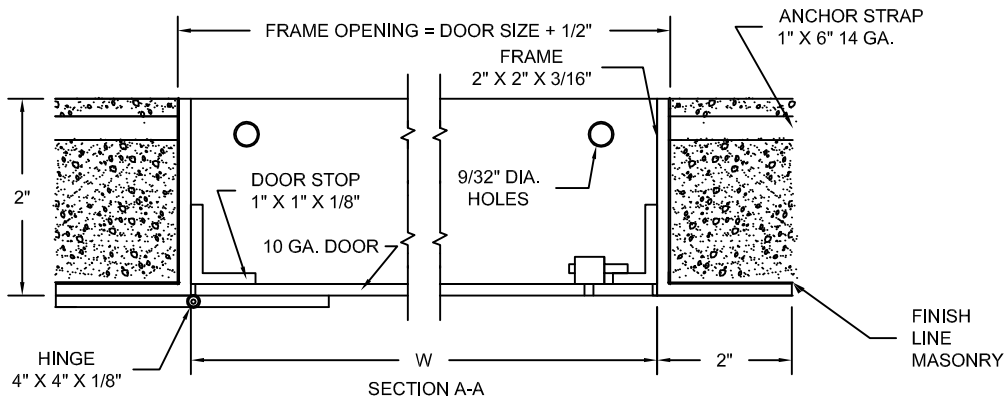
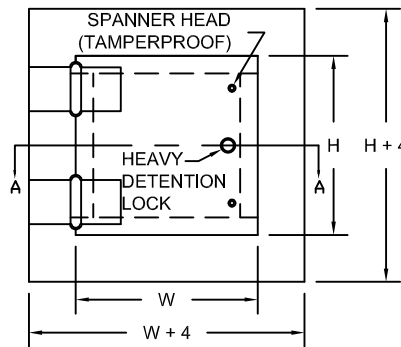
1. Frame shall be 3/16" x 2" x 2" angle welded with joints ground smooth.
2. Door shall be 10 gage steel.
3. Hinges shall be heavy duty and welded to door and frame.
4. Locks shall be heavy duty detention type lock (or as specified). Additional locking devices shall be spanner-head cam latches welded flush to the surface of the door.
5. Masonry anchor straps and 1/4" mounting holes are included on all frames.
6. Finish shall be prime coat of rust inhibitive electrostatic powder, baked grey enamel.

### STANDARD SIZES

DOOR SIZE H X W (IN.)	WALL/CEILING OPENING (IN.)	SHIP WT. (LBS.)
12 x 12	12 1/2 x 12 1/2	35.0
16 x 16	16 1/2 x 16 1/2	44.0
18 x 18	18 1/2 x 18 1/2	49.0
24 x 24	24 1/2 x 24 1/2	65.0
36 x 24	36 1/2 x 24 1/2	80.0
36 x 36	36 1/2 x 36 1/2	115.0

PROJECT DATA					
Project Name:					
Architect:					
Contractor:					
Agent/Customer Name:					
Tagging Instructions:					
Special Instructions:					

PROJECT SCHEDULE					
Qty.	H	W	No. of Latches	Finish	Remarks



Distributed by  
www.Ameraproducts.com  
Phone: (800) 608-6568  
Fax: (409) 840-5545  
info@ameraproducts.com



Made with Union Labor