

LEED™ Credit Guideline



[Link to USGBC LEED Website](#)

We are a member of the US Green Building Council

Product Line

Aluminum Products

- Roof & Smoke Hatches
- Door Louvers & Pulls
- Fire Extinguisher, Valve & AED Cabinets
- Corner Guard Systems



Examples: Type of LEED Credit

Materials & Resources:

- MR 3.0 Resource Reuse
- MR 4.1, 4.2- Recycled Content
- MR 5.1 - Regional Materials

Indoor Environmental Quality:

- EQ 4.2 - Low Emitting Materials

Stainless Steel Products

- Door Lites & Louvers
- Fire Extinguisher, Valve & AED Cabinets
- Hinge Edge Guards
- Door Pulls & Kickplates
- Access Panels
- Corner Guards



Materials & Resources:

- MR 4.1, 4.2 - Recycled Content
- MR 5.1 - Regional Materials

Indoor Environmental Quality:

- EQ 4.2 - Low Emitting Materials

Painted Steel Products

- Roof & Smoke Hatches
- Access Panels
- Door Lites & Louvers
- Fire Extinguisher, Valve & AED Cabinets
- Door Edges & Astragals



Materials & Resources:

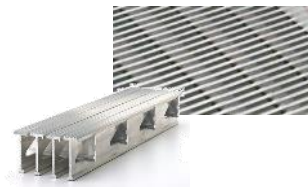
- MR 4.1, 4.2 - Recycled Content
- MR 5.1 - Regional Materials

Indoor Environmental Quality:

- EQ 4.2 - Low Emitting Materials
- EQ 8.1 - Daylight & Views

Entrance Floor Gratings & Mats

- Recessed & Surface-mount Gratings & Mats



Materials & Resources:

- MR 4.1, 4.2 - Recycled Content
- MR 5.1 - Regional Materials

Indoor Environmental Quality:

- EQ 5 - Indoor Chemical & Pollutant Source Control

Fire Extinguishers



Materials & Resources:

- MR 4.1, 4.2 - Recycled Content

Fire & Safety-Rated Glass

- PRYAN® Platinum F Glass by SaftiFirst



Innovation in Design:

- ID - Innovation in Design



More Information on Products that Contribute to Credits Under LEED

Aluminum Sheet & Extrusions; Recycled Content (Except Floor Gratings)

MR Credits 4.1, 4.2 – Recycled Content : Our aluminum products contain a minimum of 60% post-consumer, 25% pre-consumer recycled content. **Smoke Vents:** 27.7% recycled content (15.8% post-consumer, 23.8% pre-consumer) Note that most aluminum has an actual post-consumer recycled content that is much higher, but at this time it is not possible to guarantee post-consumer recycled content for a specific batch or project.

Cold Rolled Steel; Recycled Content

MR Credits 4.1, 4.2 – Recycled Content : Our cold rolled steel products contain a minimum of 23.5% post-consumer, 6.5% pre-consumer recycled content. **Smoke Vents:** 68% recycled content. Note that most cold-rolled steel has an actual post-consumer recycled content that is much higher, but at this time it is not possible to guarantee post-consumer recycled content for a specific batch or project.

Stainless Steel; Sheet Recycled Content

MR Credits 4.1, 4.2 – Recycled Content: Our Stainless Steel products contain a minimum of 44% post-consumer, 16% pre-consumer recycled content. Note that most stainless steel has an actual post-consumer recycled content that is much higher, but at this time it is not possible to guarantee post-consumer recycled content for a specific batch or project.

Metal Product Finishes; Stainless Steel, Aluminum & Painted CRS

EQ Credits 4.2 - Low-Emitting Materials: Reduce the quantity of indoor air contaminants. Many of our products are finished with a powder coating paint system. Powder coat paints contain no VOC's (Volatile Organic Compounds) and are totally metal, lead, chromate and solvent free. VOC-free powder coating does not generate hazardous waste as the powder is not mixed with solvents or other additives and this creates an obvious environmental advantage for both suppliers and users alike. Activar products of aluminum or stainless steel also qualify as low-emitting materials.

Fire Extinguishers; Recycled Content

MR Credits 4.1, 4.2 – Recycled Content: The steel in our fire extinguishers contain a minimum of 6.8% pre-consumer recycled content. Note that some steel fire extinguishers may have an actual recycled content that is higher, but at this time it is not possible to guarantee the recycled content for a specific batch or project.

Entrance Floor Gratings & Mats

MR Credits 4.1, 4.2 – Recycled Content: Aluminum gratings contain between 44-52% pre-consumer recycled content. Stainless steel gratings contain a minimum of 25% post consumer content.

EQ Credits 5 - Indoor Chemical & Pollutant Source Control: Floor gratings and mats that are intended for permanent installation, contribute to minimizing and controlling pollutant entry and reduce contamination between occupied areas. Minimum installation sizes are required for this credit.

Corner Guards - Vinyl :

MR Credits - Resource Reuse: Models with Aluminum retainers may be re-used by re-covering with a new cover.

MR Credits 4.1, 4.2 - Recycled Content: Models CGV, SGV, SGVA & SGVAF have a minimum of 35% pre-consumer content.

Regional Materials

MR Credits 5.1 - Regional Materials: Products installed within 500 miles of the manufacturing facility can utilize this credit. We cannot always guarantee exactly where our products are manufactured, but they are normally manufactured at one of these Activar Construction Product Group locations; **Bloomington, MN; Commerce, CA; Fort Myers, FL.** Please notify us at the time of order if information for the manufacturing location is desired. Note re: MR 5.2: The point of extraction is not available for any of the raw materials used in our products.

Vision Lites in Doors

EQ Credits 8.1 - Daylight & Views: Daylight 75% of Spaces: Provide for the building occupants, a connection between indoor spaces and the outdoors through the introduction of daylight and views into the regularly occupied areas of the building.

PRYAN® Platinum F Glass by SaftiFirst

ID Credit - Innovation in Design: Cradle-to-Cradle (C2C) Products Certified by MBDC (McDonough Braungart Design Chemistry) automatically qualify for this credit. Products that meet this criteria achieve exceptional performance above the requirements and/or innovative performance in green building categories not specifically addressed by the LEED Green Building Rating System. Also an EPP product.

[Cradle to Cradle Certification by MBDC](#)

[EPA Environmentally Preferable Purchasing Product \(EPP\):](#)