

## F5000/FREESIA

RETRO-FIT INSTALLATION  
WATERFREE URINAL

### BEFORE STARTING INSTALLATION

- Check rough-in height to achieve 24" rim height (17" rim height for ADA).
- Check slope. Downhill slope, per code, is essential because waterfree urinals require gravity flow for drainage.
- Check DWV material. Suitable materials include cast iron, PVC, ABS, and galvanized steel.
- **Never install on copper DWV due to copper's susceptibility to corrosion.**
- Shut off water supply and cap the nipple with the 3/4" chrome cap (provided).

### TUBE CUTTING CHART

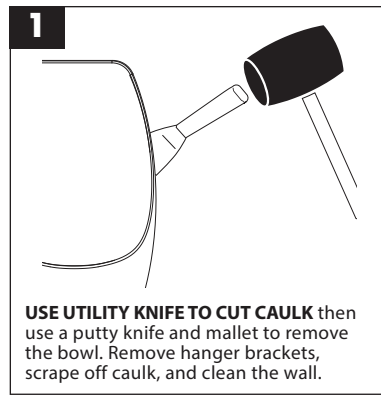
- Measure drain nipple depth (in inches) to find trim length (in inches)
- 13 1/2" or more **DO NOT CUT TUBE**
- 3 3/4" or less **DO NOT USE TUBE**

OR LESS	TRIM	OR LESS	TRIM	OR LESS	TRIM
13 3/4"	3/4"	10 1/4"	3 1/4"	6 3/4"	7 3/4"
13 1/2"	1/2"	10	4	6 1/2"	7 1/2"
13 1/4"	1/4"	9 3/4"	4 3/4"	6 1/4"	7 1/4"
13	1	9 1/2"	4 1/2"	6	8
12 3/4"	1 3/4"	9 1/4"	4 1/4"	5 3/4"	8 3/4"
12 1/2"	1 1/2"	9	5	5 1/2"	8 1/2"
12 1/4"	1 1/4"	8 3/4"	5 3/4"	5 1/4"	8 1/4"
12	2	8 1/2"	5 1/2"	5	9
11 3/4"	2 3/4"	8 1/4"	5 1/4"	4 3/4"	9 3/4"
11 1/2"	2 1/2"	8	5	4 1/2"	9 1/2"
11 1/4"	2 1/4"	7 3/4"	6 3/4"	4 1/4"	9 1/4"
11	3	7 1/2"	6 1/2"	4	10
10 3/4"	3 3/4"	7 1/4"	6 1/4"		
10 1/2"	3 1/2"	7	7		

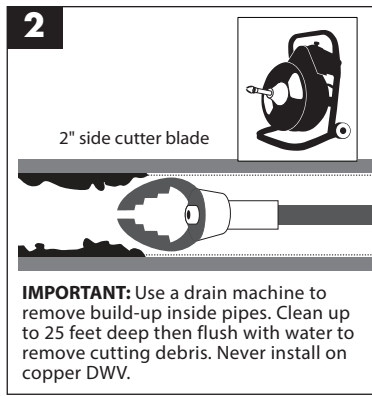
The information in this document is subject to change without notice.  
©2014 Falcon Waterfree Technologies, LLC. All rights reserved.



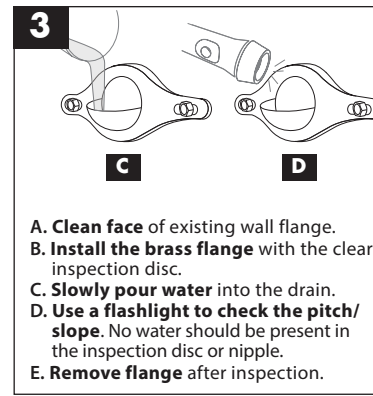
**CAUTION** After removing any urinal from the drain line, it's normal for certain naturally occurring but **potentially hazardous sewer gases** to escape through the opening until the waterless cartridge is installed properly into the waterless urinal. If you need to leave an open drain line unattended after removing the urinal from the wall, temporarily wedge paper towels or a rag into the drain hole to reduce any outflow of sewer gases, and remove the paper towels or rag prior to completing the urinal or cartridge installation. **Never smoke, have an open flame, or place your nose or mouth near open drain lines or waterless urinal housings into which a cartridge is not yet properly installed.** You also can wear a breathing mask when removing or installing any waterless urinal or cartridge to reduce potential exposure to any such gases.



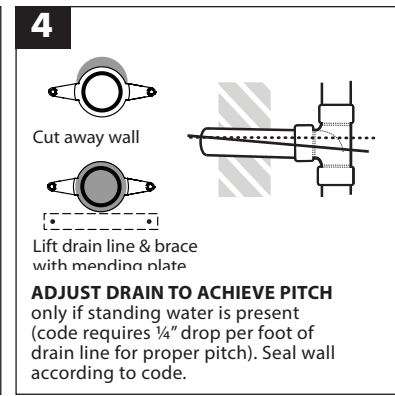
**USE UTILITY KNIFE TO CUT CAULK** then use a putty knife and mallet to remove the bowl. Remove hanger brackets, scrape off caulk, and clean the wall.



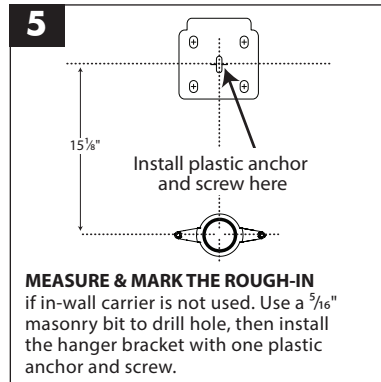
**IMPORTANT:** Use a drain machine to remove build-up inside pipes. Clean up to 25 feet deep then flush with water to remove cutting debris. Never install on copper DWV.



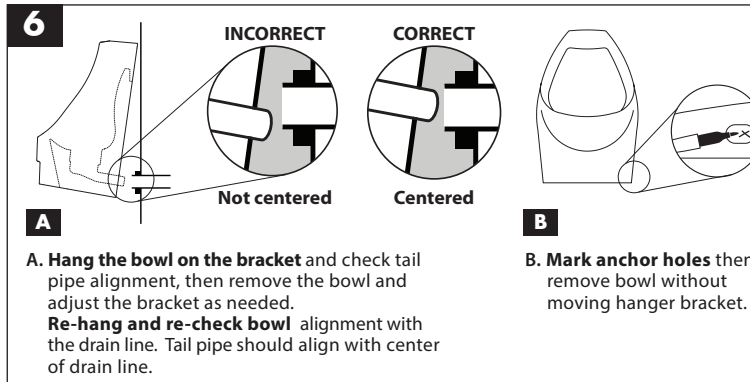
**A. Clean face** of existing wall flange.  
**B. Install the brass flange** with the clear inspection disc.  
**C. Slowly pour water** into the drain.  
**D. Use a flashlight to check the pitch/slope.** No water should be present in the inspection disc or nipple.  
**E. Remove flange** after inspection.



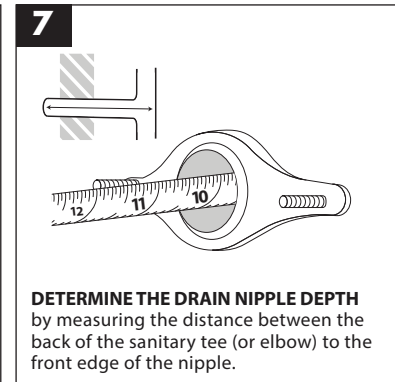
**ADJUST DRAIN TO ACHIEVE PITCH** only if standing water is present (code requires 1/4" drop per foot of drain line for proper pitch). Seal wall according to code.



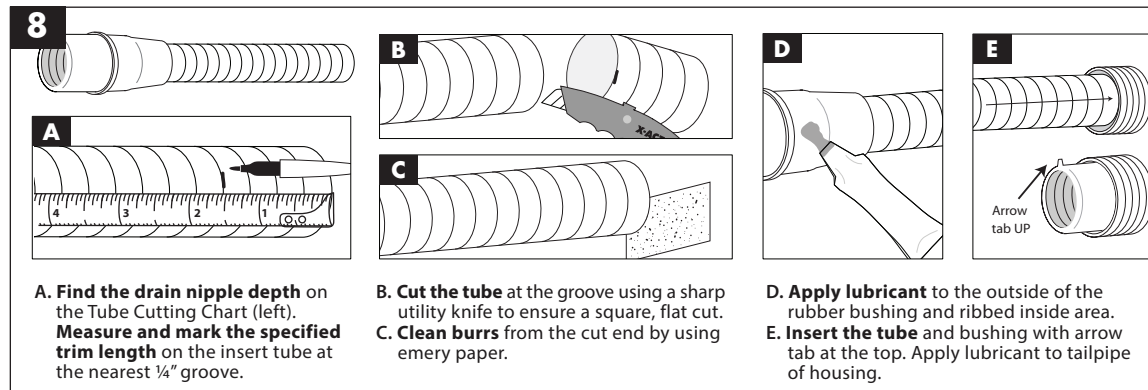
**MEASURE & MARK THE ROUGH-IN** if in-wall carrier is not used. Use a 5/16" masonry bit to drill hole, then install the hanger bracket with one plastic anchor and screw.



**A. Hang the bowl on the bracket** and check tail pipe alignment, then remove the bowl and adjust the bracket as needed.  
**Re-hang and re-check bowl** alignment with the drain line. Tail pipe should align with center of drain line.



**DETERMINE THE DRAIN NIPPLE DEPTH** by measuring the distance between the back of the sanitary tee (or elbow) to the front edge of the nipple.



**A. Find the drain nipple depth** on the Tube Cutting Chart (left). **Measure and mark the specified trim length** on the insert tube at the nearest 1/4" groove.

**B. Cut the tube** at the groove using a sharp utility knife to ensure a square, flat cut.  
**C. Clean burrs** from the cut end by using emery paper.

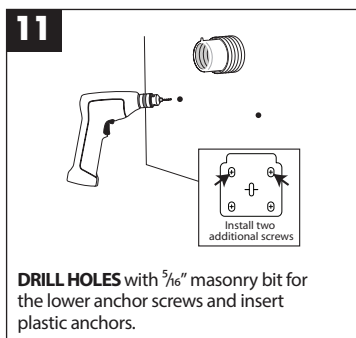
**D. Apply lubricant** to the outside of the rubber bushing and ribbed inside area.  
**E. Insert the tube** and bushing with arrow tab at the top. Apply lubricant to tailpipe of housing.



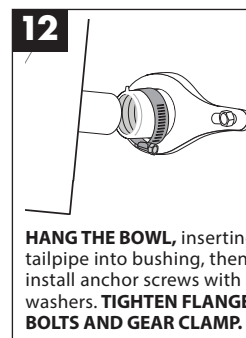
**PLACE THE SEAL INTO THE FLANGE** with the ribs facing out. Install the flange with washers and hex nuts, but do not tighten completely.



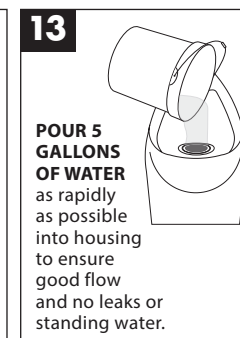
**INSTALL THE GEAR CLAMP** with screw head at bottom, but do not tighten.



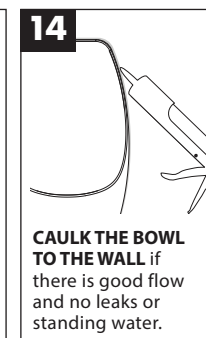
**DRILL HOLES** with 5/16" masonry bit for the lower anchor screws and insert plastic anchors.



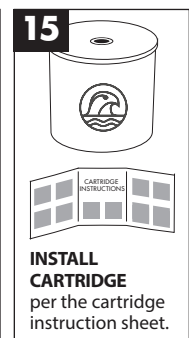
**HANG THE BOWL**, inserting tailpipe into bushing, then install anchor screws with washers. **TIGHTEN FLANGE BOLTS AND GEAR CLAMP.**



**POUR 5 GALLONS OF WATER** as rapidly as possible into housing to ensure good flow and no leaks or standing water.



**CAULK THE BOWL TO THE WALL** if there is good flow and no leaks or standing water.



**INSTALL CARTRIDGE** per the cartridge instruction sheet.