

### Concealed Mounting Kits

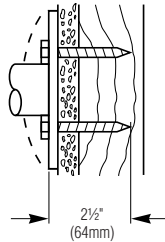
Order one mounting kit per grab bar flange.

#### Stud walls with wood supports

##### 899-010

MATERIAL INCLUDED  
2 - 1/4 x 2 1/2" PLATED  
STEEL HEX HEAD LAG BOLTS

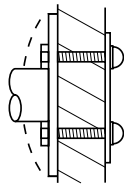
**Bradex**<sup>®</sup>



#### Partition walls

##### 899-011

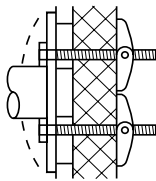
MATERIAL INCLUDED  
A) 2 - 1/4-20 x 1 1/2"  
PLATED STEEL HEX HEAD  
MACHINE SCREWS  
B) 2 CAP NUTS  
C) 1 BACKING PLATE



#### Panel walls

##### 899-012

MATERIAL INCLUDED  
A) 2 - 1/4-20 x 3"  
PLATED STEEL HEX  
HEAD MACHINE  
SCREWS  
B) 2 TOGGLE NUTS

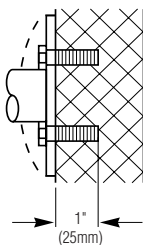


#### Masonry walls

##### 899-013

MATERIAL INCLUDED  
A) 2 - 1/4-20 x 1"  
PLATED STEEL HEX HEAD  
MACHINE SCREWS  
B) 2 - 1/4-20 LEAD ANCHORS

**Bradex**<sup>®</sup>



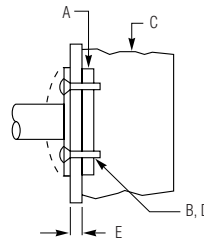
### Metal Stud Wall Mounting Kits

##### 899-014

(CONCEALED OR EXPOSED)  
MATERIAL REQUIRED  
A) IN-WALL ANCHOR PLATE  
899-015 (NOT INCLUDED).  
SPECIFY AND ORDER  
SEPARATELY - SEE ANCHOR  
PLATES IN NEXT COLUMN.

B) #10 sheet metal screws  
(furnished by others)  
C) METAL STUD  
D) 2 - 1/4-20 x 1 1/4"  
FLAT HEAD machine SCREWS.\*  
E) WALL DIMENSIONS (TO BE FURNISHED  
IF OVER 3/4").

\* INCLUDED WITH MOUNTING KIT 899-014.

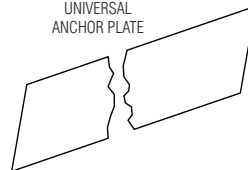


### In-Wall Anchor Plates

##### 899-015

x LENGTH (TO 96")  
MATERIAL  
4" x 1/8" COLD ROLLED STEEL -  
LENGTH AS SPECIFIED TO 96"  
NOTE: SEPARATELY ORDER  
899-014 MOUNTING KITS  
AS REQUIRED.

UNIVERSAL  
ANCHOR PLATE

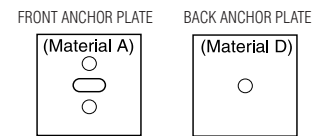


INSTALLATION:  
FASTEN TO STUDS BEFORE WALL APPLIED.  
RECESS AS REQUIRED FOR FLUSH FINISH WALL APPLICATION.  
TO ATTACH GRAB BAR, DRILL #2 (.221 DIAMETER)  
HOLES THRU WALLBOARD AND ANCHOR PLATE.  
ATTACH WITH 1/4-20 x 1 1/4" PLATED PHILLIPS  
OVAL HEAD ROLLOCK TAPPING SCREWS.

### Block Wall Mounting Kits

##### 899-016

(CONCEALED OR EXPOSED)



MATERIAL REQUIRED

A) FRONT ANCHOR PLATE 3" x 3" x 1/8" COLD ROLLED  
STEEL - CENTER SLOT PUNCHED AND 2 FASTENER  
HOLES PRE-PUNCHED.\*  
B) 2 - 1/4-20 x 1 1/4" PLATED PHILLIPS FLAT HEAD SELF  
TAPPING SCREWS.\*  
C) 1 - 3/8-16 STEEL ZINC-PLATED TIE ROD WITH NUT.\*  
D) BACK ANCHOR PLATE 3" x 3" x 3/16" COLD ROLLED  
STEEL - TAPPED FOR AND INCLUDING 3/8-16 STUD  
AND NUT.\*  
E) FINISHED WALL THICKNESS (TO BE FURNISHED IF  
OVER 3/4").  
F) MASONRY WALL (THICKNESS TO BE FURNISHED).

\* INCLUDED WITH MOUNTING KIT 899-016.

**Bradex**<sup>®</sup>

Washroom Accessories  
Document No. 8880

Page 1 of 2

This information is subject to change without notice.

Always consult local and national codes for proper installation guidelines.  
Conformity and compliance to local and national codes is the  
responsibility of the installer.

7-16-2010

Orders composed of products indicated as **Bradex**<sup>®</sup> will be available to ship in three days  
after receipt of order at the factory. There is no pricing penalty for this service from Bradley.

© 2010 Bradley Corporation

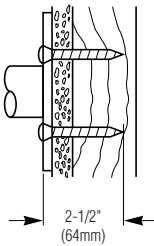
Distributed by  
**www.Ameraproducts.com**  
Phone: (800) 608-6568  
Fax: (409) 840-5545  
info@ameraproducts.com

### Exposed Mounting Kits

#### Stud walls with wood supports

##### □ 899-020

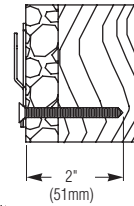
MATERIAL INCLUDED  
2 - #14 x 2½" STAINLESS  
STEEL PHILLIPS OVAL HEAD  
SHEET METAL SCREWS



#### Stud walls

##### □ 899-026

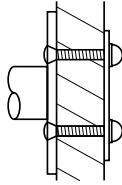
(CONCEALED OR EXPOSED)  
MATERIAL INCLUDED  
4 - #10 x 2"  
ZINC PLATED  
FLAT HEAD  
WOOD SCREW  
NOTE: FOR MIRROR MOUNTING  
ONLY.  
(1) PER H-HANGER



#### Partition walls

##### □ 899-021

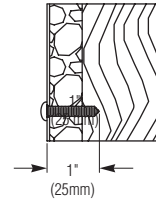
MATERIAL INCLUDED  
A) 2 - ¼-20 x 1½"  
STAINLESS STEEL  
PHILLIPS OVAL HEAD  
MACHINE SCREWS  
B) 2 CAP NUTS  
C) 1 BACKING PLATE



#### Stud walls

##### □ 899-027

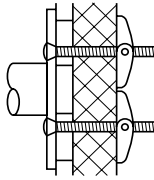
(CONCEALED OR EXPOSED)  
MATERIAL INCLUDED  
4 - #10 x 1"  
ZINC PLATED  
PAN HEAD  
WOOD SCREW



#### Panel walls

##### □ 899-022

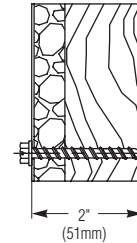
MATERIAL INCLUDED  
A) 2 - ¼-20 x 3"  
STAINLESS STEEL  
PHILLIPS OVAL HEAD  
MACHINE SCREWS  
B) 2 TOGGLE NUTS



#### Stud walls

##### □ 899-028

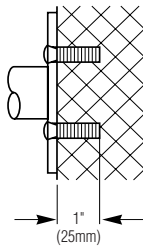
(EXPOSED MOUNTING)  
7 - SLOTTED HEX WASHER HEAD  
¼" x 2" LONG  
18-8 STAINLESS STEEL  
SHEET METAL



#### Masonry walls

##### □ 899-023

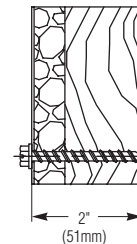
MATERIAL INCLUDED  
A) 2 - ¼-20 x 1"  
STAINLESS STEEL  
PHILLIPS OVAL HEAD  
MACHINE SCREWS  
B) 2 - ¼-20 LEAD  
ANCHORS



#### Stud walls

##### □ 899-029

(EXPOSED MOUNTING)  
10 - SLOTTED HEX WASHER HEAD  
¼" x 2" LONG  
18-8 STAINLESS STEEL  
SHEET METAL



Washroom Accessories  
Document No. 8880

Page 2 of 2

This information is subject to change without notice.

Always consult local and national codes for proper installation guidelines.  
Conformity and compliance to local and national codes is the  
responsibility of the installer.

7-16-2010

Orders composed of products indicated as **Bradex**® will be available to ship in three days  
after receipt of order at the factory. There is no pricing penalty for this service from Bradley.

© 2010 Bradley Corporation

Distributed by  
[www.Ameraproducts.com](http://www.Ameraproducts.com)  
Phone: (800) 608-6568  
Fax: (409) 840-5545  
[info@ameraproducts.com](mailto:info@ameraproducts.com)