

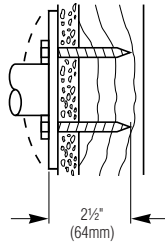
### Concealed Mounting Kits

Order one mounting kit per grab bar flange.

#### Stud walls with wood supports

##### 899-010

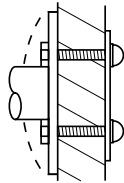
MATERIAL INCLUDED  
2 - 1/4 x 2 1/2" PLATED  
STEEL HEX HEAD LAG BOLTS



#### Partition walls

##### 899-011

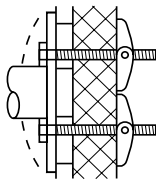
MATERIAL INCLUDED  
A) 2 - 1/4-20 x 1 1/2"  
PLATED STEEL HEX HEAD  
MACHINE SCREWS  
B) 2 CAP NUTS  
C) 1 BACKING PLATE



#### Panel walls

##### 899-012

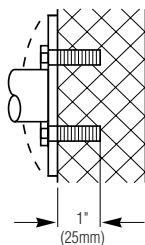
MATERIAL INCLUDED  
A) 2 - 1/4-20 x 3"  
PLATED STEEL HEX  
HEAD MACHINE  
SCREWS  
B) 2 TOGGLE NUTS



#### Masonry walls

##### 899-013

MATERIAL INCLUDED  
A) 2 - 1/4-20 x 1"  
PLATED STEEL HEX HEAD  
MACHINE SCREWS  
B) 2 - 1/4-20 LEAD ANCHORS

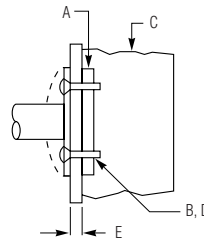


### Metal Stud Wall Mounting Kits

##### 899-014

(CONCEALED OR EXPOSED)  
MATERIAL REQUIRED

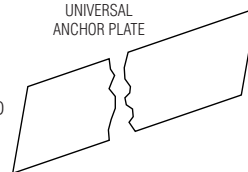
- A) IN-WALL ANCHOR PLATE 899-015 (NOT INCLUDED). SPECIFY AND ORDER SEPARATELY - SEE ANCHOR PLATES IN NEXT COLUMN.
  - B) #10 sheet metal screws (furnished by others)
  - C) METAL STUD
  - D) 2 - 1/4-20 x 1 1/4" FLAT HEAD machine SCREWS.\*
  - E) WALL DIMENSIONS (TO BE FURNISHED IF OVER 3/4").
- \* INCLUDED WITH MOUNTING KIT 899-014.



### In-Wall Anchor Plates

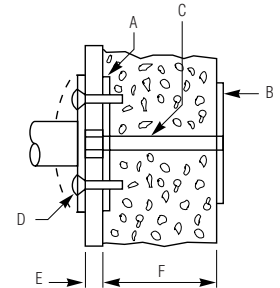
##### 899-015

x LENGTH (TO 96")  
MATERIAL  
4" x 1/8" GALVANIZED, CARBON  
STEEL - LENGTH AS SPECIFIED  
TO 96" NOTE: SEPARATELY  
ORDER 899-014 MOUNTING  
KITS AS REQUIRED.



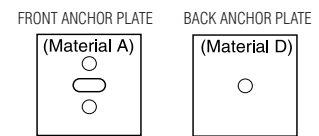
INSTALLATION:  
FASTEN TO STUDS BEFORE WALL APPLIED.  
RECESS AS REQUIRED FOR FLUSH FINISH WALL APPLICATION.  
TO ATTACH GRAB BAR, DRILL #2 (.221 DIAMETER)  
HOLES THRU WALLBOARD AND ANCHOR PLATE.  
ATTACH WITH 1/4-20 x 1 1/4" PLATED PHILLIPS  
OVAL HEAD ROLLOCK TAPPING SCREWS.

### Block Wall Mounting Kits



##### 899-016

(CONCEALED OR EXPOSED)



MATERIAL REQUIRED

- A) FRONT ANCHOR PLATE 3" x 3" x 1/8" COLD ROLLED STEEL, GALVANIZED, CARBON STEEL - CENTER SLOT PUNCHED AND 2 FASTENER HOLES PRE-PUNCHED.\*
- B) 2 - 1/4-20 x 1 1/4" PLATED PHILLIPS FLAT HEAD SELF TAPPING SCREWS.\*
- C) 1 - 3/8-16 STEEL ZINC-PLATED TIE ROD WITH NUT.\*
- D) BACK ANCHOR PLATE 3" x 3" x 3/16" COLD ROLLED STEEL - TAPPED FOR AND INCLUDING 3/8-16 STUD AND NUT.\*
- E) FINISHED WALL THICKNESS (TO BE FURNISHED IF OVER 3/4").
- F) MASONRY WALL (THICKNESS TO BE FURNISHED).

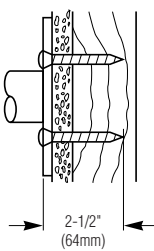
\* INCLUDED WITH MOUNTING KIT 899-016.

### Exposed Mounting Kits

#### Stud walls with wood supports

##### □ 899-020

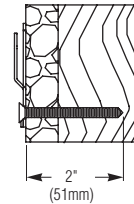
MATERIAL INCLUDED  
2 - #14 x 2½" STAINLESS  
STEEL PHILLIPS OVAL HEAD  
SHEET METAL SCREWS



#### Stud walls

##### □ 899-026

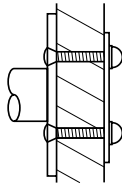
(CONCEALED OR EXPOSED)  
MATERIAL INCLUDED  
4 - #10 x 2"  
ZINC PLATED  
FLAT HEAD  
WOOD SCREW  
NOTE: FOR MIRROR MOUNTING  
ONLY.  
(1) PER H-HANGER



#### Partition walls

##### □ 899-021

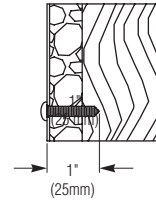
MATERIAL INCLUDED  
A) 2 - ¼-20 x 1½"  
STAINLESS STEEL  
PHILLIPS OVAL HEAD  
MACHINE SCREWS  
B) 2 CAP NUTS  
C) 1 BACKING PLATE



#### Stud walls

##### □ 899-027

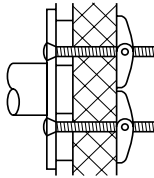
(CONCEALED OR EXPOSED)  
MATERIAL INCLUDED  
4 - #10 x 1"  
ZINC PLATED  
PAN HEAD  
WOOD SCREW



#### Panel walls

##### □ 899-022

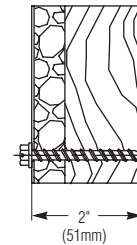
MATERIAL INCLUDED  
A) 2 - ¼-20 x 3"  
STAINLESS STEEL  
PHILLIPS OVAL HEAD  
MACHINE SCREWS  
B) 2 TOGGLE NUTS



#### Stud walls

##### □ 899-028

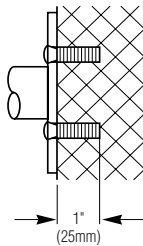
(EXPOSED MOUNTING)  
7 - SLOTTED HEX WASHER HEAD  
¼" x 2" LONG  
18-8 STAINLESS STEEL  
SHEET METAL



#### Masonry walls

##### □ 899-023

MATERIAL INCLUDED  
A) 2 - ¼-20 x 1"  
STAINLESS STEEL  
PHILLIPS OVAL HEAD  
MACHINE SCREWS  
B) 2 - ¼-20 LEAD  
ANCHORS



#### Stud walls

##### □ 899-029

(EXPOSED MOUNTING)  
10 - SLOTTED HEX WASHER HEAD  
¼" x 2" LONG  
18-8 STAINLESS STEEL  
SHEET METAL

