

- Model 236 — Recessed**  
(recesses 7½"; projects 4")
- Model 236-10 — Semi-Recessed**  
(recesses 3⅝"; projects 7⅞")
- Model 236-11 — Surface-Mounted**  
(projects 11½")
- Standard Series — Satin Finish

## Product Materials

**CABINET:** 22 gauge stainless steel with exposed surfaces in architectural satin finish. Welded construction with seamless corners and burr-free edges.

**FLANGE:** 22 gauge stainless steel with exposed surfaces in architectural satin finish. One piece seamless construction, 1" wide with ¼" return.

**DOOR:** 18 gauge stainless steel with full length piano hinge and tumbler lock keyed like other Bradley units.

**WASTE CONTAINER:** 22 gauge stainless steel. All welded construction. Secured to cabinet with tumbler lock keyed like other Bradley units.

**TOWEL DISPENSER:** ABS plastic, 0.100 minimum thickness.

**LINER (optional):** heavy duty stitched vinyl coated nylon. Part #P11-001.

## Capacity

Waste Container — 12 gal. (1.6 cu. ft.)

Towel Dispenser — one standard center pull towel roll up to 9" wide x 9" diameter.

## Installation

Verify all rough-in dimensions before installation.

**RECESSED** unit requires rough wall opening 15¾"W x 54½"H x 7½"D. Secure to framing with mounting screws (included) at holes provided. Shim at screw points as required.

**SEMI-RECESSED** unit requires rough wall opening 15¾"W x 54½"H x 3¾"D. Secure to framing with mounting screws (included) at holes provided. Shim at screw points as required. Surface-mounted units must have holes drilled by installer.

## Guide Specification

Recessed combination towel dispenser and waste receptacle shall be 22 gauge stainless steel with exposed surfaces in satin finish. Towel cabinet door equipped with piano hinge and secured by tumbler lock. Towel cabinet to accommodate one standard center pull paper towel roll. Removable 12 gal. stainless steel waste receptacle. Reusable vinyl liner is available separately. Order # P11-004.

**Overall dimensions: 17½"W x 56"H x 11½"D.**



## Optional Features

Feature	Suffix
<input type="checkbox"/> Large Capacity Waste Receptacle — 18 gal. (projects 5½")	-36

## ADA Compliant

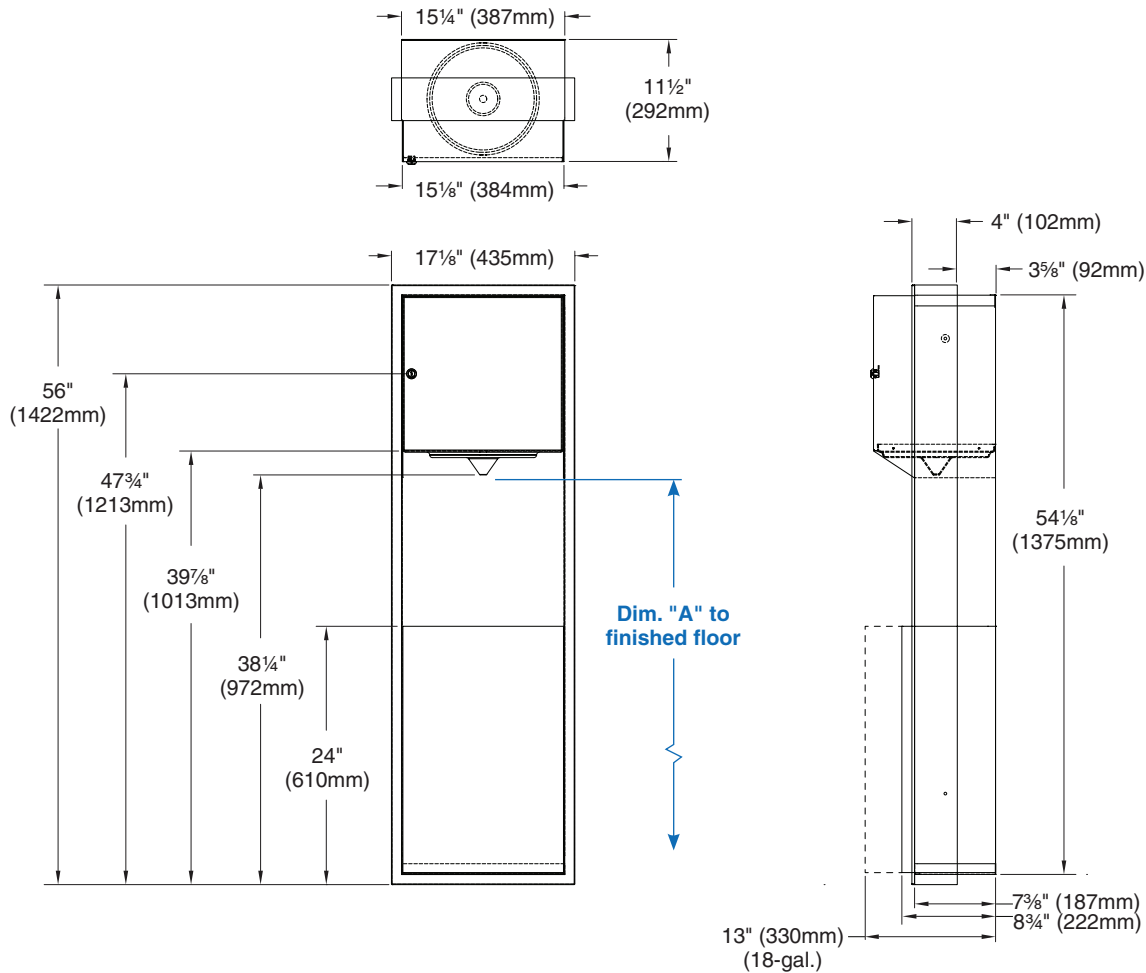
- Consult local and national accessibility codes for proper installation guidelines.
- Conformity and compliance to local and national codes is the responsibility of the installer.

Washroom Accessories  
Document No. 8103



Distributed by  
**www.Ameraproducts.com**  
Phone: (800) 608-6568  
Fax: (409) 840-5545  
info@ameraproducts.com

### Dimensions — Semi-Recessed Unit

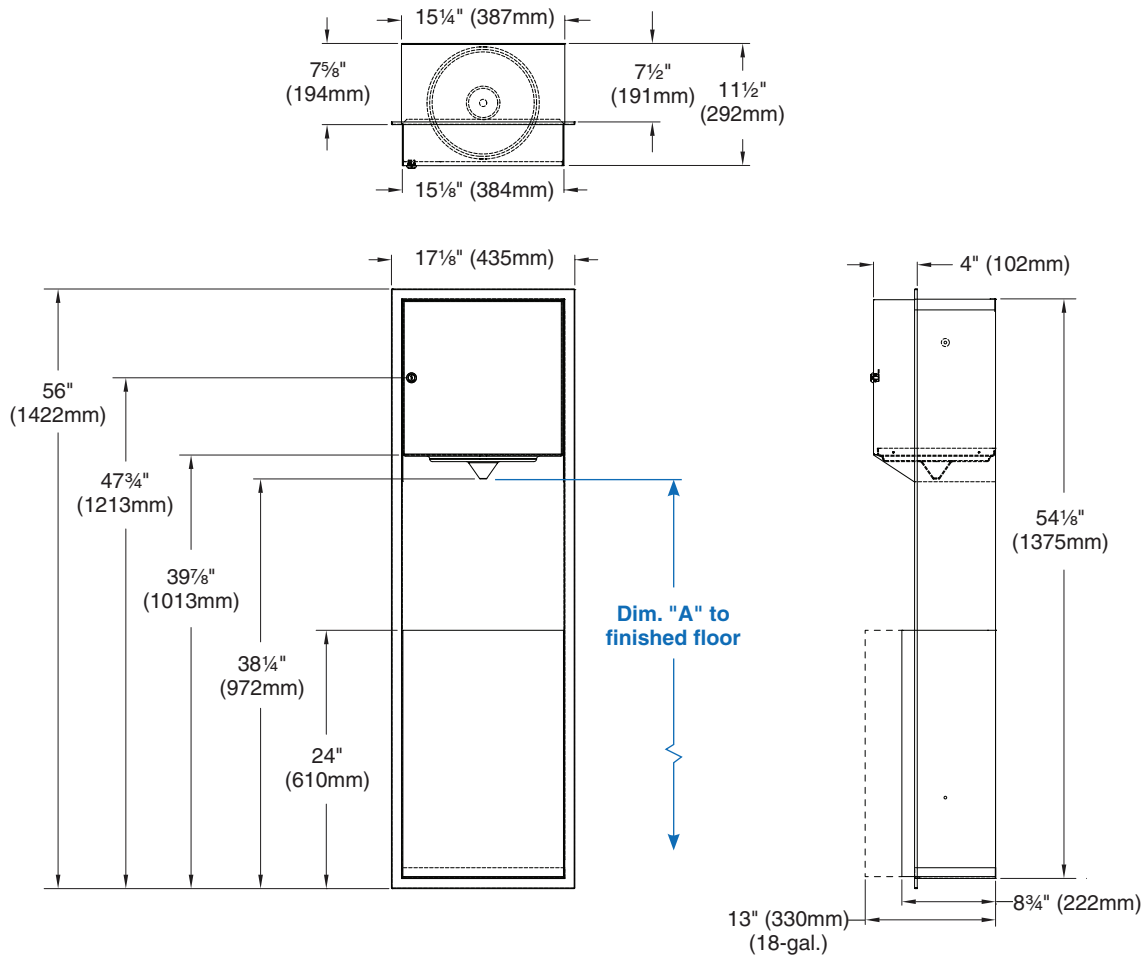


Dim. "A" Key Surface:	For Dim. "A"	Top of Rough Wall Opening	Bottom of Rough Wall Opening
Paper towel dispensing tip to finished floor	48" (1219mm)	65" (648mm)	10 1/2" (267mm)
	45" (1143mm)	62" (622mm)	7 1/2" (191mm)
	42" (1067mm)	59" (597mm)	4 1/2" (114mm)
	40" (1016mm)	57" (521mm)	2 1/2" (64mm)
<b>Rough wall opening:</b>			
Semi-recessed:		15 3/4" (401mm) Wide x 54 1/2" (1385mm) High x 3 3/4" (96mm) Deep	

Washroom Accessories  
Document No. 8103



### Dimensions — Recessed and Surface-Mounted Units



Dim. "A" Key Surface:	For Dim. "A"	Top of Rough Wall Opening	Bottom of Rough Wall Opening
Paper towel dispensing tip to finished floor	48" (1219mm)	65" (648mm)	10 1/2" (267mm)
	45" (1143mm)	62" (622mm)	7 1/2" (191mm)
	42" (1067mm)	59" (597mm)	4 1/2" (114mm)
	40" (1016mm)	57" (521mm)	2 1/2" (64mm)
<b>Rough wall opening:</b>			
Surface Mount:	No rough opening, see overall dimensions		
Recessed:	15 3/4" (401mm) Wide x 54 1/2" (1385mm) High x 7 1/2" (191mm) Deep		

Washroom Accessories  
Document No. 8103

