

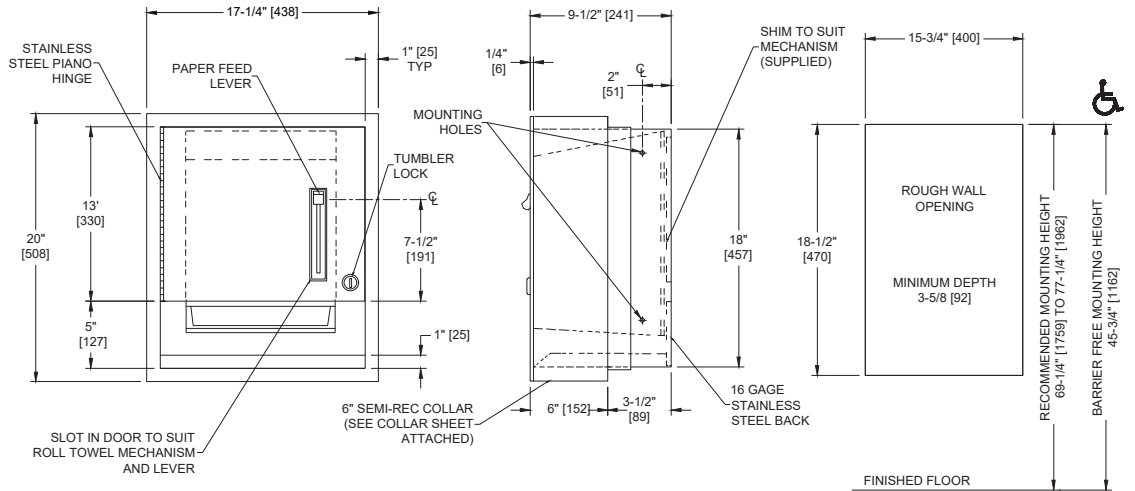
**Technical Data Sheet**

**Roll Paper Towel Dispenser – Semi-Recessed**

Paper Towel Dispensers

Traditional

MasterFormat Section 10 28 13



Scan for Information



**SUSTAINABILITY/LEED**

MR 4.1 (1) MR 6 (1) EQ 4.2 (1)  
MR 4.2 (1) EQ 4.1 (1) EQ 4.4 (1)

**NOTE:**  
ALL DIM'S INCH [MM]  
ILLUSTRATION FOR REF ONLY AND NTS  
FOR CLEANING INSTRUCTIONS SEE APPROPRIATE SECTIONS IN  
PRODUCT CARE & MAINTENANCE BULLETIN (PCM) ON ASI WEBSITE

**PRODUCT OVERVIEW**

Unit holds and dispenses one 8" [203] or 9" [229] wide standard towel roll up to 800 ft. (244m) long and one stub roll up to 4" diameter [Ø102]. Unit allows settings for towel dispense length of 2-1/2" [64], 4" [102] or 5" [127] with no adapter plates. Locking door prevents unauthorized access or removal. Semi-Recessed with stainless steel collar.



**KEY FEATURES & SPECIFICATIONS**

- Adjustable dispensing settings
- Type 304 Stainless Steel - Satin Finish
- Semi-Recessed - w/ 6" collar
- Pull Type
- Roll Towels - up to 800 ft. Length



American Specialties, Inc. | 441 Saw Mill River Road, Yonkers, NY 10701 | #04523-6

R1 11/1/2021 3/10/202 Revision: Issued: Revised:

CSI: 10 28 13 Toilet Accessories

**OPERATION & MAINTENANCE**

Towels are fed by lever action until supply is depleted. Unit may be reloaded with a full roll to automatically start when finished with an existing partial (stub) roll. Preset length of towel dispensed may be adjusted for 2-1/2", 4", or 5" (64mm, 102mm, or 127mm) long increments. Locking door prevents unauthorized access or removal.

**TECHNICAL INFORMATION / PRODUCT PROPERTIES**

Property	Value
Dimensions	
Construction	17-1/4" [438] W x 20" [508] H x 9-3/4" [248] D
Power	
Operation	Type 304 Stainless Steel - Satin Finish
Mounting	N/A
Capacity	Manual - Pull Type

**INSTALLATION** Semi-Recessed with 6" collar  
Roll Towels - up to 800 ft. Length

Mount unit in wall recess using #10 self-threading screws (by others) through concealed mounting holes provided. Note that top of rough wall opening is 3/4" [19] below top of unit.

Rough Wall Opening (RWO) required is 15-3/4" [400] W x 18-1/2" [470] H x 3-1/2" [89] D minimum



**WARRANTY**

One (1) Year from date of Invoice

