



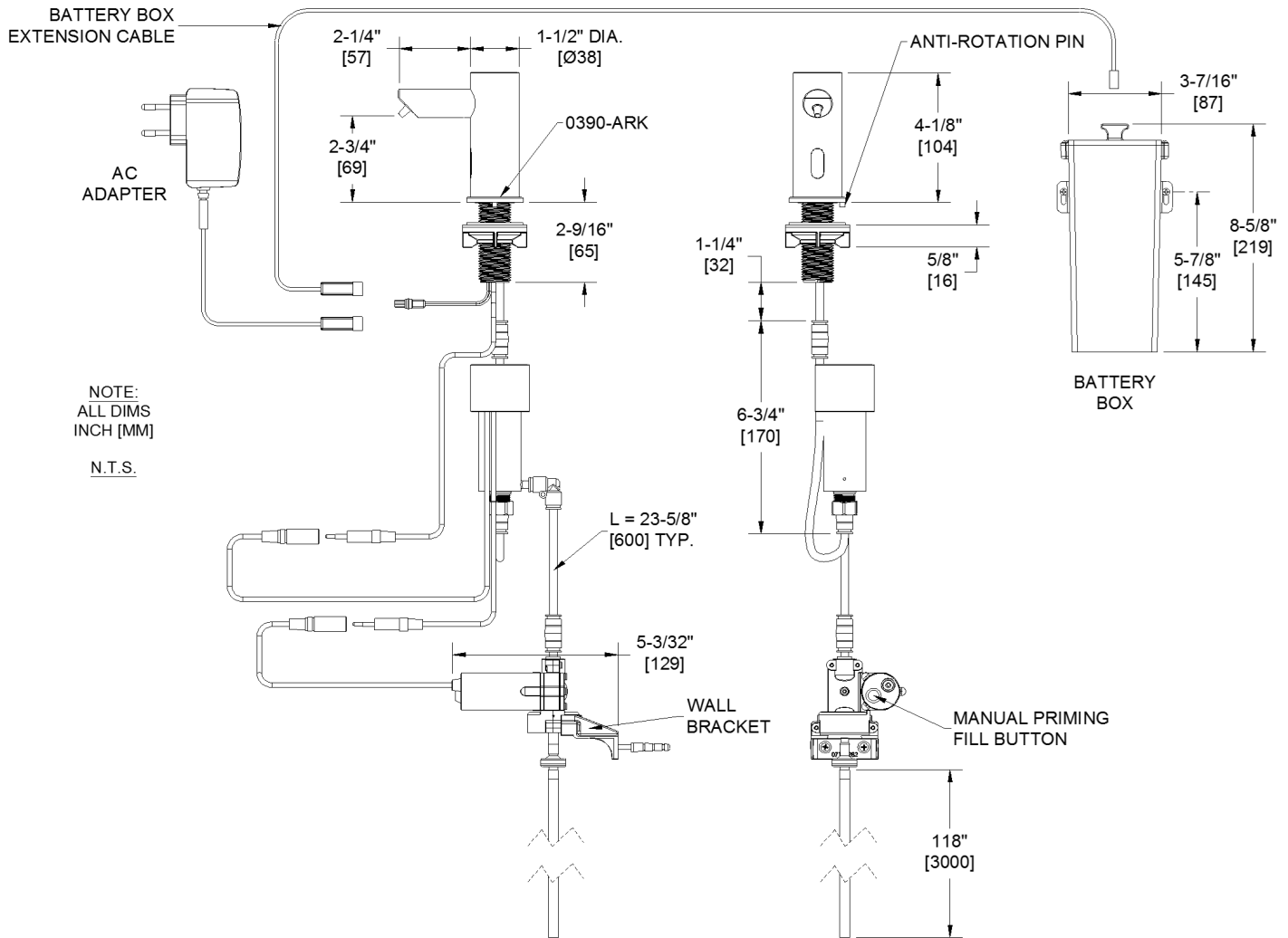
Distributed by  
www.Ameraproducts.com  
Phone: (800) 608-6568  
Fax: (409) 840-5545  
info@ameraproducts.com

MODEL №: 0393-(n)

ISSUED: 6/2016

REVISED: 12 JUL 2016

**EZFill™ MULTI-FEED VANITY MOUNTED AUTOMATIC FOAM SOAP DISPENSER (PAGE 1 OF 2)**



**SPECIFICATION**

EZFill™ Multi-Feed Vanity Mounted Automatic Foam Soap Dispenser shall dispense foam soap within the viscosity range of 1 – 100 cP (MPa•s) in stream cycles with soap volume and air volume adjustable by owner with remote control programming unit (optional, model 0393-R; supplied one (1) per six (6) pack). Operation is initiated by hands-free sensor controlled by microprocessor digital circuitry and peristaltic pump is powered by six (6) D size 1.5V batteries (supplied by others) in a screw-locked IP67 rated compartment (provided, select model) located under counter or an AC Adapter (also IP67 rated, provided, select model) plugged into GFCI outlet (by others). Unit shall have chrome plated spout and sensor housing with a highly polished finish over all exposed surfaces. Unit shall have LED in sensor to indicate function and battery condition. A self adhesive label shall be provided for use at owner's option to indicate dispenser function. Unit shall mount on vanity deck up to 2" [51] thick through 1" [Ø25] diameter hole minimum to 1-1/4" [Ø32] max and shall resist forced rotation up to 177 in-lbf (20 Nm) with 0390-ARK properly installed (provided). **NOTE: Soap supply shall be from EZFill™ Vanity Mounted Top-Fill Port and Multi-Feed Tank (model 0390, supplied separately) with capacity of 169 oz (5 L) of liquid foaming soap containing no abrasives or particulates.** Up to six (6) individual EZFill™ vanity mounted automatic foam soap dispenser units shall draw from each Multi-Feed tank located under counter through connection to under-counter soap distribution tubing (provided). Owner's Manual and Installation Guide (OM & IG) shall be provided with unit in carton.

**EZFill™ Multi-Feed Vanity Mounted Automatic Foam Soap Dispenser shall be Model № 0393-\_\_\_\_ (specify model suffix from schedule) of American Specialties, Inc., 441 Saw Mill River Road, Yonkers, NY 10701-4913**

Accessory Specialties

AMERICAN DISPENSER

Desert Ray Products

MITROUS INC.



MODEL №: 0393-(n)

ISSUED: 6/2016

REVISED: 12 JUL 2016

**EZFILL™ MULTI-FEED VANITY MOUNTED AUTOMATIC FOAM SOAP DISPENSER (PAGE 2 OF 2)**

**INSTALLATION**

Install spout and sensor housing to vanity deck with anti-rotation kit escutcheon flange, rubber washers and basin nut (supplied) through 1-1/8" diameter [Ø28.5] mounting hole and 5/32" diameter [Ø4] adjacent hole for anti-rotation pin of escutcheon flange. Connect short flex tubing from soap dispenser head to fitting on top of foam compressor. Connect com plug from dispenser head to com socket from foam compressor. Mount pump assembly with wall bracket to convenient structure under vanity within 24" [610] of L-fitting on foam compressor bottom with two (2) screws and wall anchors (supplied). Connect long flex tubing from air compressor to fitting on top of pump assembly. Connect com plug from foam compressor to com socket from pump assembly. Connect soap supply flex tubing (provided attached to fitting on pump assembly) to one of six available connectors on Multi-Feed tank (model 0390, supplied separately) so that tube end is just above bottom of tank. Mount battery compartment in convenient location under vanity deck with two (2) screws and wall anchors (supplied) within easy reach of extension cable length and plug connector into mating inline power connector. Install six (6) D size 1.5V cells (supplied by others) in under-deck battery compartment according to polarity indication, plug extension cable jack into battery box socket in cover handle and screw lock cover. Alternatively, plug AC Adapter into GFCI power outlet located under vanity within 13.5 ft (412 cm) of pump assembly and plug connector into mating inline power connector.

**OPERATION**

System shall operate each time an object is positioned within the sensing range of 1-3/16" to 3-15/16" ± 3/8" [30 to 100 ± 10] directly in front of the spout of the dispenser. A stream of foam soap will be pumped from the nozzle during each activation. Optional remote control unit Model № 0393-R (supplied {one (1) per six (6) pack} or order separately) will allow owner programming of alternate dispense amounts and simplify priming when refilling Multi-Feed tank (not supplied, order separately) for initial setup and soap-out conditions. See Model № 0393-R TDS and Owner's Manual for complete description of functions. Unit will dispense foam soap while batteries are at suitable charge level (or AC adapter is connected) and correct viscosity soap is present in the tank and system is correctly maintained to enable dispensing (red LED is not flashing continuously or does not remain dark when trigger attempt is made). LED will display red flash for sensing and continuous flashing for low battery condition. Manual priming fill button releases soap for easy soap priming. System shall allow filling soap from top of vanity without requiring removal of tank under vanity. Soap is manually replenished and batteries are replaced on service interval determined by maintenance schedule. See OM & IG for complete description of Features and Operations.

Schedule of Model № Suffix Codes and Application

Model № Suffix	Service Application
1A	Universal Model, Battery Operation
1AC	USA/UK/EU Interchangeable Plug Model, AC Adapter Operation
3AC	AU Model, AC Adapter Operation
6-1A	Universal Model, Battery Operation, Six Pack
6-1AC	USA/UK/EU Interchangeable Plug Model, AC Adapter Operation, Six Pack
6-3AC	AU Model, AC Adapter Operation, Six Pack