

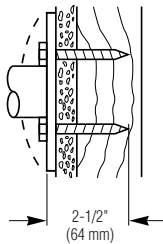
Concealed Mounting Kits

Stud walls with wood supports

□ 899-010

MATERIAL INCLUDED
2 - 1/4 x 2-1/2" PLATED
STEEL HEX HEAD LAG BOLTS

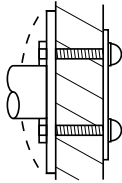
Bradex[®]



Partition walls

□ 899-011

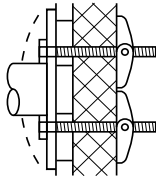
MATERIAL INCLUDED
A) 2 - 1/4-20 x 1-1/2"
PLATED STEEL HEX HEAD
MACHINE SCREWS
B) 2 CAP NUTS
C) 1 BACKING PLATE



Panel walls

□ 899-012

MATERIAL INCLUDED
A) 2 - 1/4-20 x 3"
PLATED STEEL HEX
HEAD MACHINE
SCREWS
B) 2 TOGGLE NUTS

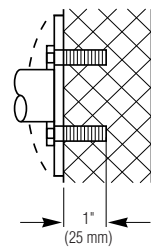


Masonry walls

□ 899-013

MATERIAL INCLUDED
A) 2 - 1/4-20 x 1"
PLATED STEEL HEX HEAD
MACHINE SCREWS
B) 2 - 1/4-20 LEAD ANCHORS

Bradex[®]



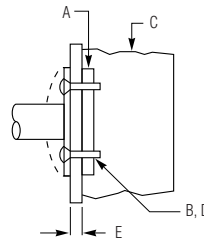
Metal Stud Wall Mounting Kits

□ 899-014

(CONCEALED OR EXPOSED)
MATERIAL REQUIRED
A) IN-WALL ANCHOR PLATE
899-015 (NOT INCLUDED).
PECIFY AND ORDER
SEPARATELY - SEE ANCHOR
PLATES IN NEXT COLUMN.

B) #10 sheet metal screws
(furnished by others)
C) METAL STUD
D) 2 - 1/4-20 x 1-1/4"
FLAT HEAD machine SCREWS.*
E) WALL DIMENSIONS (TO BE FURNISHED
IF OVER 3/4").

* INCLUDED WITH MOUNTING KIT 899-014.

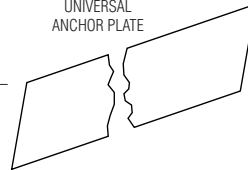


In-Wall Anchor Plates

□ 899-015

x LENGTH (TO 96")
MATERIAL
4" x 1/8" COLD ROLLED STEEL -
LENGTH AS SPECIFIED TO 96"
NOTE: SEPARATELY ORDER
899-014 MOUNTING KITS
AS REQUIRED.

UNIVERSAL
ANCHOR PLATE



INSTALLATION:
FASTEN TO STUDS BEFORE WALL APPLIED.
RECESS AS REQUIRED FOR FLUSH FINISH WALL APPLICATION.
TO ATTACH GRAB BAR, DRILL #2 (.221 DIAMETER)
HOLES THRU WALLBOARD AND ANCHOR PLATE.
ATTACH WITH 1/4-20 x 1-1/4" PLATED PHILLIPS
OVAL HEAD ROLLOCK TAPPING SCREWS.

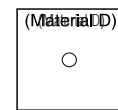
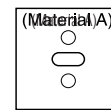
Block Wall Mounting Kits

□ 899-016

(CONCEALED OR EXPOSED)

FRONT ANCHOR PLATE

BACK ANCHOR PLATE



MATERIAL REQUIRED

A) FRONT ANCHOR PLATE 3" x 3" x 1/8" COLD ROLLED
STEEL - CENTER SLOT PUNCHED AND 2 FASTENER
HOLES PRE-PUNCHED.*
B) 2 - 1/4-20 x 1-1/4" PLATED PHILLIPS FLAT HEAD SELF
TAPPING SCREWS.*
C) 1 - 3/8-16 STEEL ZINC-PLATED TIE ROD WITH NUT.*
D) BACK ANCHOR PLATE 3" x 3" x 3/16" COLD ROLLED
STEEL - TAPPED FOR AND INCLUDING 3/8-16 STUD
AND NUT.*
E) FINISHED WALL THICKNESS (TO BE FURNISHED IF
OVER 3/4").
F) MASONRY WALL (THICKNESS TO BE FURNISHED).

* INCLUDED WITH MOUNTING KIT 899-016.

Bradex[®]

Washroom Accessories
Document No. 8880

Page 1 of 2

This information is subject to change without formal notice.

Always consult local and national codes for proper installation guidelines.
Conformity and compliance to local and national codes is the
responsibility of the installer.

9-30-2008

Orders composed of products indicated as **Bradex**[®] will be available to ship in three days
after receipt of order at the factory. There is no pricing penalty for this service from Bradley.

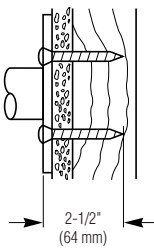
Distributed by
www.Ameraproducts.com
Phone: (800) 608-6568
Fax: (409) 840-5545
info@ameraproducts.com

Exposed Mounting Kits

Stud walls with wood supports

□ 899-020

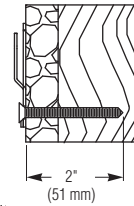
MATERIAL INCLUDED
2 - #14 x 2-1/2" STAINLESS
STEEL PHILLIPS OVAL HEAD
SHEET METAL SCREWS



Stud walls

□ 899-026

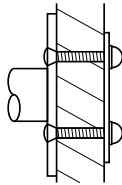
(CONCEALED OR EXPOSED)
MATERIAL INCLUDED
4 - #10 x 2"
ZINC PLATED
FLAT HEAD
WOOD SCREW
NOTE: FOR MIRROR MOUNTING
ONLY.
(1) PER H-HANGER



Partition walls

□ 899-021

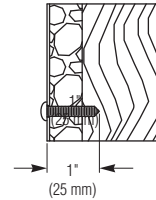
MATERIAL INCLUDED
A) 2 - 1/4-20 x 1-3/8"
STAINLESS STEEL
PHILLIPS OVAL HEAD
MACHINE SCREWS
B) 2 CAP NUTS
C) 1 BACKING PLATE



Stud walls

□ 899-027

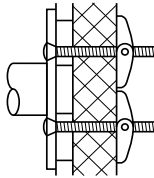
(CONCEALED OR EXPOSED)
MATERIAL INCLUDED
4 - #10 x 1"
ZINC PLATED
PAN HEAD
WOOD SCREW



Panel walls

□ 899-022

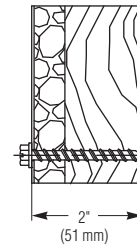
MATERIAL INCLUDED
A) 2 - 1/4-20 x 3"
STAINLESS STEEL
PHILLIPS OVAL HEAD
MACHINE SCREWS
B) 2 TOGGLE NUTS



Stud walls

□ 899-028

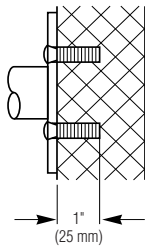
(EXPOSED MOUNTING)
7 - SLOTTED HEX WASHER HEAD
1/4" x 2" LONG
18-8 STAINLESS STEEL
SHEET METAL



Masonry walls

□ 899-023

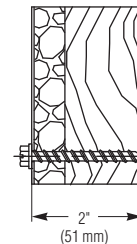
MATERIAL INCLUDED
A) 2 - 1/4-20 x 1"
STAINLESS STEEL
PHILLIPS OVAL HEAD
MACHINE SCREWS
B) 2 - 1/4-20 LEAD
ANCHORS



Stud walls

□ 899-029

(EXPOSED MOUNTING)
10 - SLOTTED HEX WASHER HEAD
1/4" x 2" LONG
18-8 STAINLESS STEEL
SHEET METAL



Washroom Accessories
Document No. 8880

Page 2 of 2

This information is subject to change without formal notice.

Always consult local and national codes for proper installation guidelines.
Conformity and compliance to local and national codes is the
responsibility of the installer.

9-30-2008

Orders composed of products indicated as **Bradex**® will be available to ship in three days after receipt of order at the factory. There is no pricing penalty for this service from Bradley.

Distributed by
www.AmeraProducts.com
Phone: (800) 608-6568
Fax: (409) 840-5545
info@ameraproducts.com