

Introducing

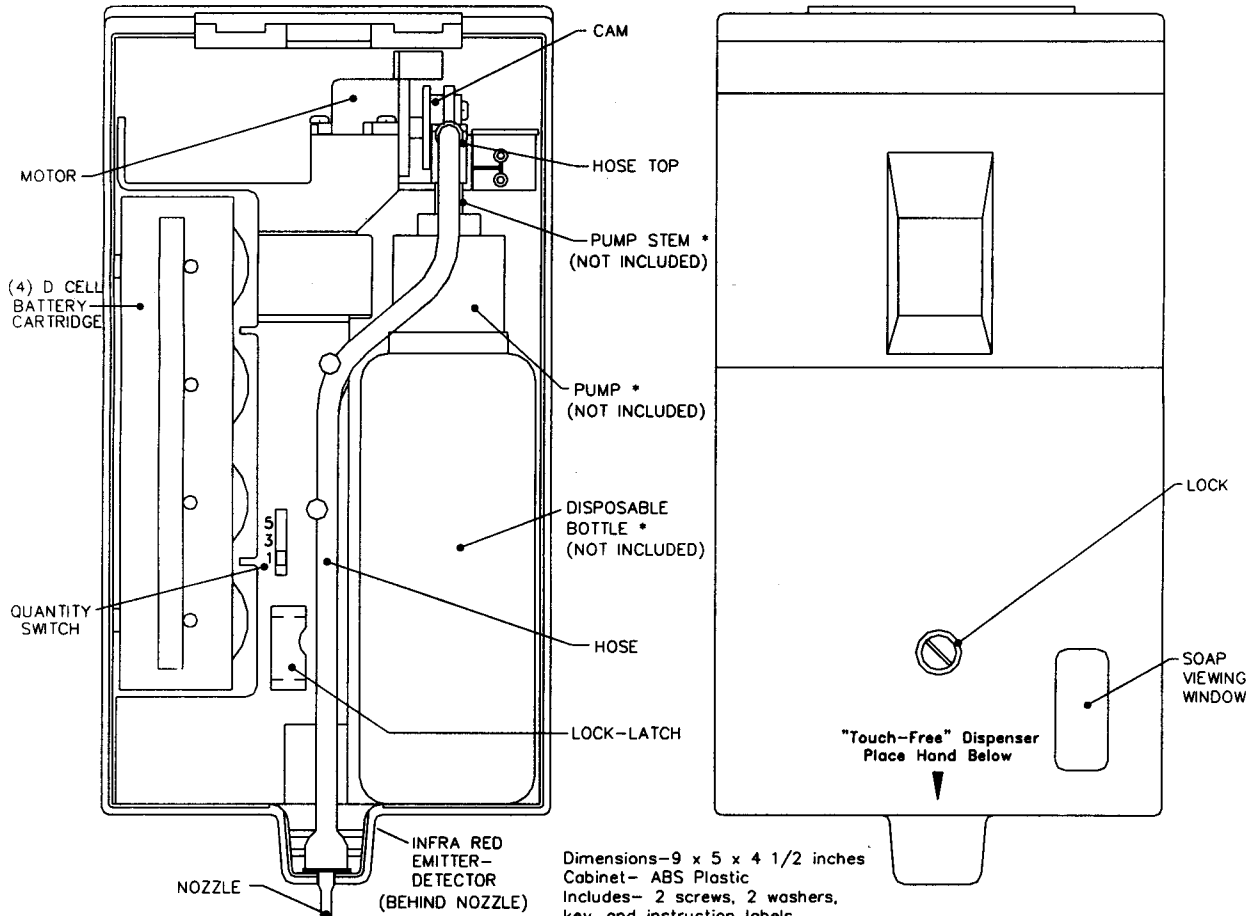
# "Touch-Free" Soap Dispenser

THE SAFEST, CLEANEST AND MOST ECONOMICAL WAY OF DISPENSING SOAPS & SANTITIZERS

## IMPORTANT

1. PLEASE FILL OUT AND RETURN WARRANTY CARD.
2. Remove all parts from carton and review the diagram to familiarize yourself with the "Touch-Free" dispenser before installation.
3. Soap Cartridges are purchased separately. Please contact your local dealer for specially formulated Antimicrobial, Antibacterial and Lotion Products.

## PARTS DIAGRAM



\* Included in soap cartridge/bottle

## TECHNOLOGY OVERVIEW

The properties of infrared technology require careful installation especially over some surfaces (i.e., stainless steel; glossy counters and other highly-reflective surfaces). The dispenser will activate within one second after placing a hand completely under the nozzle. The unit will automatically reset only after the hand has been removed for one second. **Please read the installation instructions carefully.**

# Complete Touch-Free Dispensing & Hand Care Safety

## INSTALLATION INSTRUCTIONS

1. Remove the dispenser from the box and protective plastic bag.
2. Remove front cover by pulling bottom of the front cover out and up. (Fig 1)
3. Remove the Hose Nozzle Assembly from the dispenser by pulling the Hose Top off the motor and the Nozzle from the cabinet. (Figure 2)

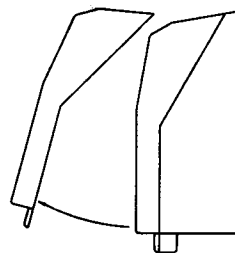


Figure 1

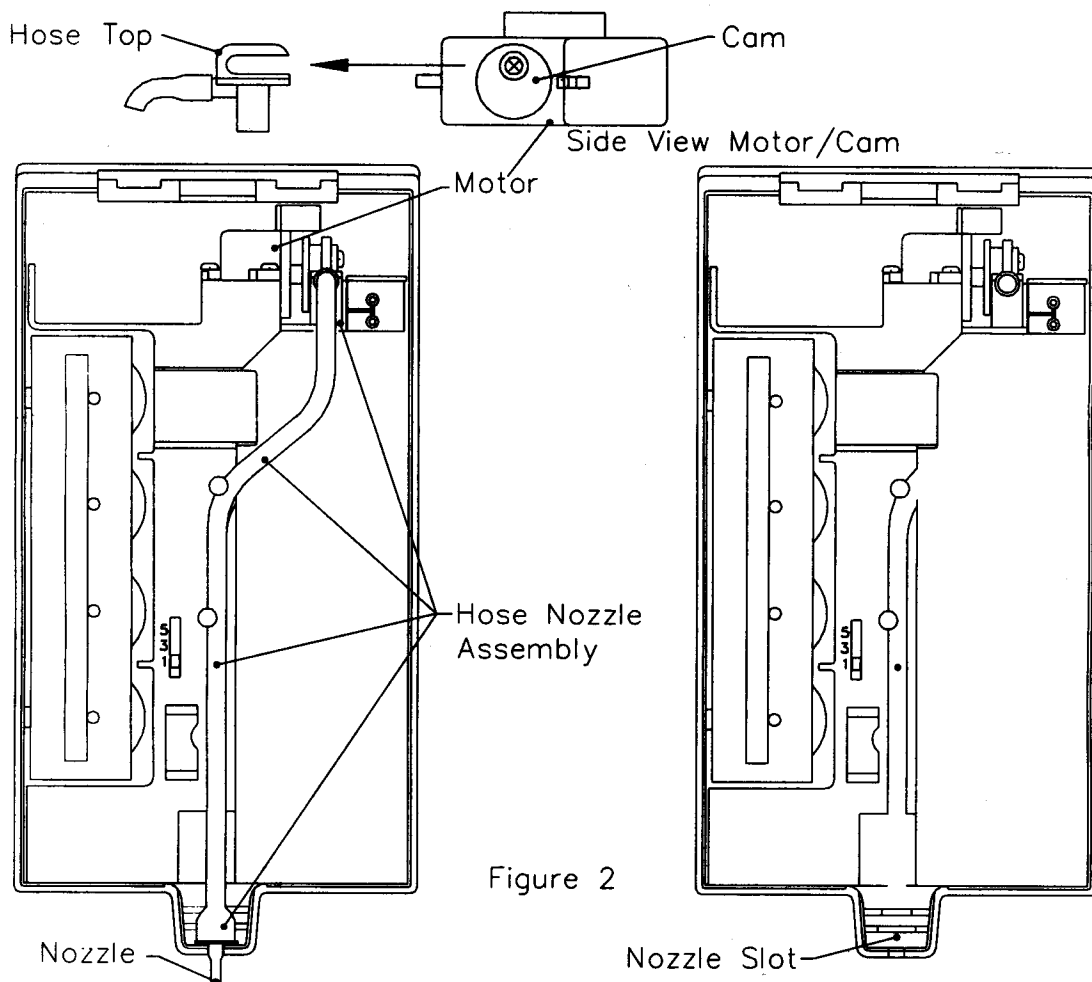


Figure 2

4. Rotate battery cartridge 180° in the Dispenser, placing the metal contacts facing the center of the dispenser. (Figure 3)

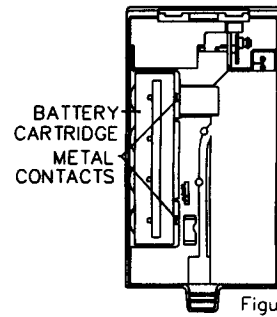


Figure 3

5. **DO NOT** replace the Hose Nozzle Assembly or load soap at this time. **Note:** Soap and lotion products are purchased separately in custom fit bottles. Please contact your local dealer for the refill cartridges.

6. Securing the Dispenser to the wall:

Locate a convenient location and height. Make sure surface below dispenser does not activate infrared sensors and mount with screws or tape.

- Open cover and secure with screws or optional double sided tape (surface must be smooth, flat and thoroughly cleaned), at the **Recommended Minimum Installation Height of ten inches.** \*
- Your Dispenser is ready for you to load with soap.

**Note:** \* **Stainless steel and other highly reflective surfaces may require the Dispenser to be mounted at higher than 2 inches from the point of first activation for proper operation.**

\* **Tape alone may not hold the unit to all surfaces. Use screws provided with unit whenever possible.**

### Loading the Soap Cartridge/Bottle: [note - pumps are permanently secured to bottle.]

A. Unscrew (counter clockwise) the spout from the pump until the spout pops up.

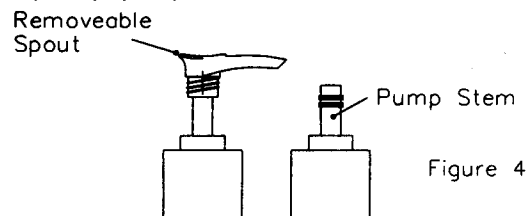


Figure 4

B. PULL the spout off the pump. You will be left with the PUMP STEM attached to the cartridge. (Figure 4)

C. Place Hose Top on the pump stem. **FIRMLY** and **SLOWLY** push the Hose Top down until you hear two "clicks". (Figure 5)

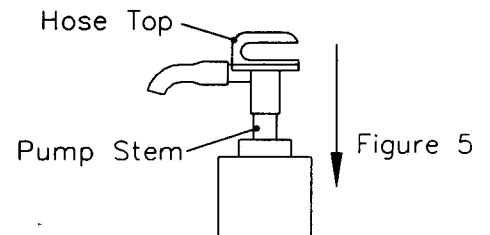


Figure 5

**Note:** This step is critical to insure proper flow of the soap product.

D. Loading the soap cartridge into dispenser:

1 Secure the Hose Top to the motor by sliding the C clamp over the cam, then push bottle into cabinet. (Figure 6)

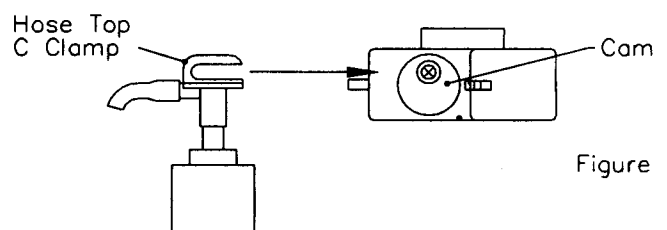
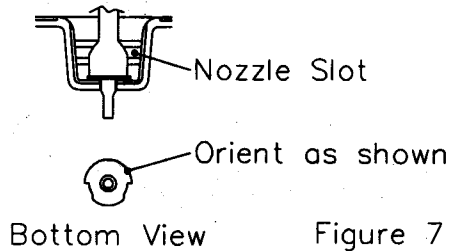


Figure 6

2. Secure the Nozzle properly between the two slots at the base of the cabinet. (Figure 7)



3. Secure Hose in cabinet. (Figure 2)

E. Select Soap Setting - Cycle Switch (1, 3, 5 cycles)

Select desired soap setting (1, 3, or 5 cycles). Each cycle represents 1 ml of product (i.e., 3 cycles = 3 ml). (Figure 8)

**Note:** If hand is removed before the selected 3 or 5 cycles, unit will stop dispensing soap.

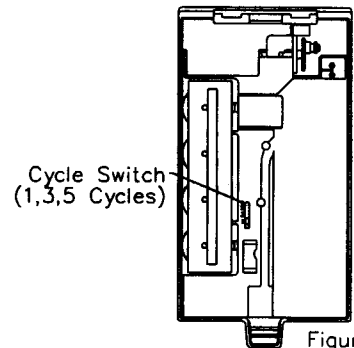


Figure 8

If the unit does not activate within five seconds after placing your hand under dispenser, check that battery cartridge is properly installed and that batteries are fresh.

F. Priming Dispenser:

Activate the dispenser until the soap completely fills the hose.

G. Closing the Dispenser :

Close the cover securely, latching the top first then "snapping" the bottom closed. If the cover does not fully close, check placement of nozzle.

The Dispenser can be closed securely without engaging the key. However it is recommend that the cover be locked at all time to prevent tampering.

- turn key clockwise, to lock
- turn key counter clockwise, to unlock

Your "Touch-Free" Dispenser is now fully installed and operational.