

**HAND DRYERS**

**E88-UL / E88C-UL / E88CS-UL / E88A-UL / E88AC-UL / E88ACS-UL  
E88O-UL / E88AO-UL / E85-UL / E85A-UL**



04 / 04

**INSTALLATION AND OPERATING MANUAL**

**USA**

**SANIFLOW CORPORATION**  
2655 LeJeune Rd.,  
Suite 810. Coral Gables, FL 33134.  
Tel.: 305 424 24 33  
Fax: 305 424 24 35  
info@saniflowcorp.com  
www.saniflowcorp.com

**SPAIN**

**MEDICLINICS, S.A.**  
Industria, 54  
E-08025BARCELONA  
Tel.: +34 93 446 47 00  
Fax: +34 93 348 10 39  
info@mediclinics.com  
www.mediclinics.com

Cod.: 95915UL



WARRANTY · WARRANTY · WARRANTY · WARRANTY

LIMITED WARRANTY

This Product covered by this limited warranty is warranted to be free from defects in material and workmanship under normal conditions for a period of ten years from the date of purchase.

The manufacturer's obligation under this Limited Warranty is applicable only where a product defect has been claimed during the warranty period. The manufacturer's obligation under this Limited Warranty is limited to either (I) replacement of the Product; or (II) replacement of defective parts. To claim under this Limited Warranty, contact one of Mediclinics, S.A. official dealers.

Mediclincs, S.A. shall not be responsible for any other damage, including, but not limited to, any defects or damage caused by or resulting from: (a) alterations to the product; (b) use of the product in an incorrect manner or for an unreasonable use; (c) failure to use the product in a safe and reasonable manner, and (d) repair of the product by unauthorized personnel.

LIMITATION ON LIABILITY

THE WARRANTY SET FORTH ABOVE IS EXCLUSIVE AND NO OTHER WARRANTY, WHETHER WRITTEN OR ORAL, IS EXPRESSED OR IMPLIED. MEDICLINICS, S.A. SPECIFICALLY DISCLAIMS THE IMPLIED WARRANTIES OF MERCHANTABILITY AND FITNESS FOR A PARTICULAR PURPOSE.

IN NO EVENT SHALL MEDICLINICS, S.A. BE LIABLE FOR INDIRECT, SPECIAL, INCIDENTAL OR CONSEQUENTIAL DAMAGES (INCLUDING, BUT NOT LIMITED TO, LOSS OF PROFITS, LOSS OF CUSTOMERS, LOSS OF USE, DAMAGE TO GOODWILL OR TO BUSINESS REPUTATION) OR FOR ANY OTHER LOSSES FROM ANY CAUSE, INCLUDING DAMAGES CAUSED BY THE PRODUCT, WHETHER OR NOT MEDICLINICS, S.A. HAS RECEIVED NOTICE OF THE POSSIBILITY OR CERTAINTY OF SUCH DAMAGES OR LOSSES.

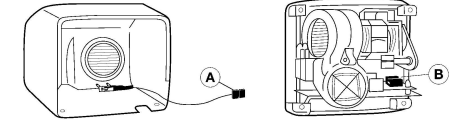
SOME STATES DO NOT ALLOW THE EXCLUSION OF INCIDENTAL OR CONSEQUENTIAL DAMAGES, SO THE ABOVE LIMITATION OR EXCLUSION MAY NOT APPLY TO YOU. THIS WARRANTY GIVES YOU SPECIFIC LEGAL RIGHTS, AND YOU MAY ALSO HAVE OTHER RIGHTS WHICH VARY FROM STATE TO STATE.

GARANTIA · WARRANTY · GARANTIE · GARANZIA

INSTALLATION

Take always care of:

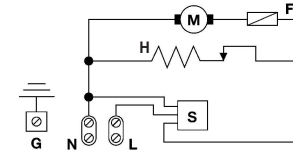
- Never tighten the wire.
- Not to force the connector's connexion.
- By handling it later or by assembly, recall not to pull the sensor's wire between the base and the cover.



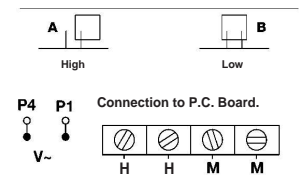
WIRING DIAGRAM

Automatic models

- H- Heating element
- M- Motor
- F- Fuse
- S- Sensor
- G- Ground

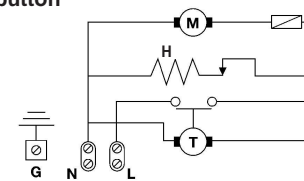


SENSOR RANGE

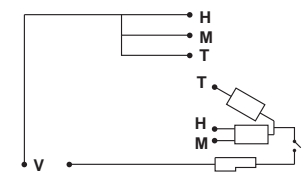


Models with pushbutton

- H- Heating element
- M- Motor
- F- Fuse
- T- Timer
- G- Ground

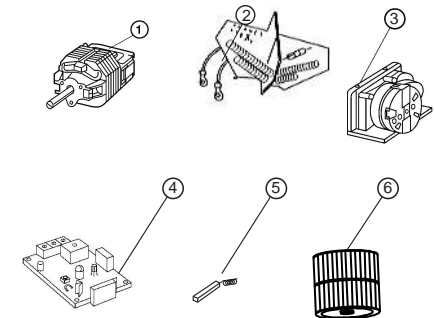


CONNECTION TO TIMER



BREAKDOWN LIST OF BASIC PARTS

		120V
Motor	1	Code RC95748-UL
Heating element	2	Code RC95760-UL
Timer	3	Code RC95730
Sensor	4	Code RC-95600-UL
Coal brushes set	5	Code RC95750-AMT Code RC95750-STC
Fan wheel	6	Code RC95777



**METHOD OF USE**

**Button models:**

Press button at the right side and obtain a powerful jet of pleasant warm air from the nozzle.

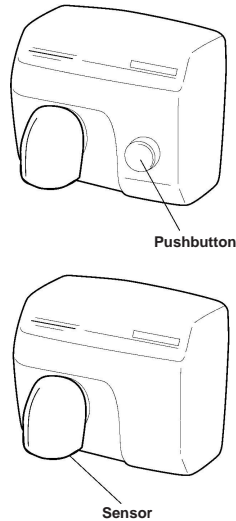
The air jet will be activated for 34 seconds and will then stop, ready for re-use.

**Automatic models:**

These models operate by hand detection. If hands are held 4"-6" (10÷15 cm) from the air discharge nozzle, the dryer will start working and will stop 2-3 seconds after use.

If the sensor is blocked due to vandalism, the dryer will completely stop working. Please, concerning automatic models, let a minimum separation of 15" (40 cm) between appliance and any shelf, marble, worktop or washbasin.

To dry hands correctly, we recommend rinsing well to remove all traces of soap. Once the dryer is working, hold the hands at an approximate distance of 4" (10 cm) and rub together. The hands can be gradually taken away from the dryer and will continue drying up to a maximum distance of 6"-8" (15÷20 cm).



**PREVENTATIVE MAINTENANCE AND CLEANING**

Correct cleaning of the machine will lengthen its working life considerably. When in use, the machine will accumulate dust inside which should be cleaned out if used regularly, at least ONCE A YEAR.

**CLEANING METHOD**

- 1- Disconnect the dryer current supply.
- 2- Unscrew the lockscrews using the special wrench.
- 3- Remove cover.
- 4- With a soft 1/2"(12 mm) bristle brush, remove the accumulated dust in the fan, rotating the same by hand.
- 5- With the same brush, clean accumulated dust in from the rest of the components.

- 6- These should be replaced when its length is less than 3/16"(5 mm).
- 7- Once the maintenance process is completed, re-mount the cover, screw down the lockscrews and connect up.
- 8- Start up the machine and leave until no further dust remaining from the cleaning process, comes out from the nozzle.

**Take care not to damage or force any component.**

- 6- Clean the air inlet grill with a medium brush. Control of the motor brushes condition.

**CLEANING OF CHROMED AND GOLD PLATED COVERS**  
For cleaning purposes only a wet cloth is to be used. Do not use any kind of detergent, acids, lye, abrasives, hydrochloric acid, etc.

MODEL	E85-UL	E85A-UL	E88-UL	E88C-UL	E88CS-UL	E88O-UL	E88 A-UL	E88AC-UL	E88ACS-UL	E88AO-UL
Input voltage	110 - 120 V									
Consumption	50/60 Hz									
Rated power	16A 2.5 Hp (1850 W)									
Weight	25.4 lb (11.5 Kg)									
MOTOR: Power	14.3 lb (6.5 Kg)									
Type	1/3 Hp (250 W) Universal Fireproof									
SCROLL-FAN										
HEATING ELEMENT: Power	2.15 Hp (1600 W)									
TIMER: Type	Electromechanical	IR sensor	Electromechanical	IR sensor						
Drying cycle	34 s	-	34 s	-						
DIMENSIONS: Height	10" (255 mm)	9.8" (250 mm)								
Width	11" (282 mm)	10.8" (275 mm)								
Depth	8.5" (215 mm)	8.3" (210 mm)								
COVER: Type	Cast iron	Steel								
Thickness	1/4" (6mm)	5/64" (2mm)								
Finish	Glazed Porcelain	Glazed Porcelain	Chrome bright	Chrome satin	Golden 24 Kt	Glazed Porcelain	Chrome bright	Chrome satin	Golden 24 Kt	
Certified in accordance with:	UL 499									
Air flow :	290 CFM (8200/min)									
Air velocity	5.512 LFM (100 Km/h)									
Air temperature	128°F (53°C)									