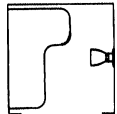


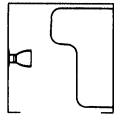
# SHOWER SEAT

- Barrier-Free Design
- Teakwood Seat

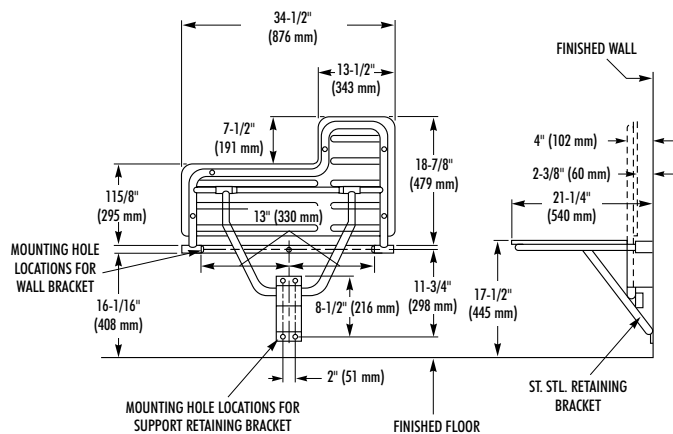
**Bradex™**



9567  
(Left Hand)



9568  
(Right Hand)



# MODEL 9567 9568

When installed as specified below, unit meets Barrier-Free requirements

## CONSTRUCTION:

- **FRAME** fabricated of 1" dia. type 304 (18-8), 18 gauge stainless steel tubing. Heliarc welded.
- **WALL BRACKET** fabricated of 16 gauge stainless steel with stainless steel piano hinges.
- **RETAINING BRACKET** fabricated of 16 gauge stainless steel. Positive bullet-type catch holds seat securely in up position.
- **SEAT** consists of 5 handrubbed teakwood slats, each 1/2" thick and 3" wide with rounded edges.

## OPERATION:

Hinged seat folds up and out of the way when not in use.

## INSTALLATION:

Provide concealed backing or anchors as specified by architect before finished wall is applied. Secure seat support bracket to wall with mounting screws (included) at holes provided. Locate mounting holes 16-1/16" above finished floor. Secure leg support retaining bracket to wall at locations shown.

## GUIDE SPECIFICATION:

Folding teakwood shower seat shall be fabricated of 1/2" thick handrubbed teakwood slats secured to a stainless steel frame of 1" diameter, 18 gauge tubing. Support leg locks into 16 gauge retaining bracket with bullet-type catch.

Overall dimensions: 34-1/2"W x 21-1/4"D x 1-1-1/2" thick.

**Folding Teakwood Shower Seat shall be Bradley Model 9567 (9568).**