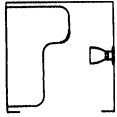


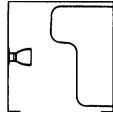
SHOWER SEAT

- Barrier-Free Design
- Accent Series — Color Laminate

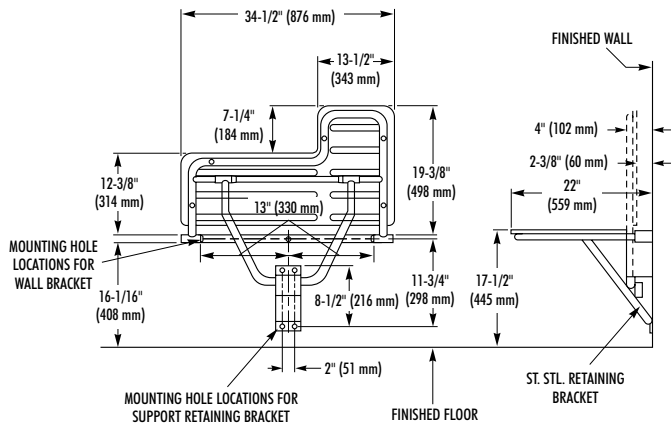
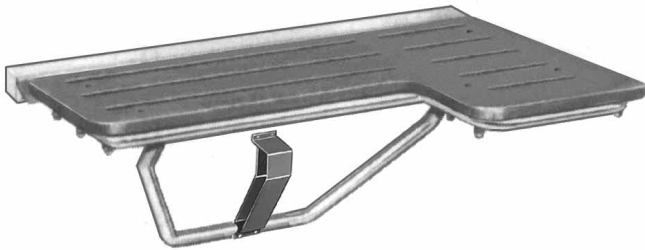
□ Specify color _____
(See color chart in back of catalog)



□ 9563
(Left Hand)



□ 9564
(Right Hand)



MODEL 9563 9564



When installed as specified
below, unit meets Barrier-Free
requirements

CONSTRUCTION:

- **FRAME** fabricated of 1" dia. type 304 (18-8), 18 gauge stainless steel tubing. Heliarc welded.
- **WALL BRACKET** fabricated of 16 gauge stainless steel with stainless steel piano hinges.
- **RETAINING BRACKET** fabricated of 16 gauge stainless steel. Positive bullet-type catch holds seat securely in position.
- **SEAT** fabricated of 5/16" thick solid plastic laminate, made of colored Melamine bonded under high pressure to a phenolic core. All exposed edges are machined smooth to a uniform dark finish.

OPERATION:

Hinged seat folds up and out of the way when not in use.

INSTALLATION:

Provide concealed backing or anchors as specified by architect before finished wall is applied. Secure to wall with mounting screws (included) at holes provided. Locate mounting holes 16-1/16" above finished floor. Secure leg support retaining bracket to wall at locations shown.

GUIDE SPECIFICATION:

Folding plastic laminate shower seat shall be fabricated of 5/16" thick Melamine bonded to a phenolic core secured to a stainless steel frame of 1" diameter, 18 gauge tubing. Support leg locks into 16 gauge retaining bracket with bullet-type catch.

Overall dimensions: 34-1/2"W x 22"D x 1-5/16" thick.

Folding Plastic Laminate Shower Seat shall be Bradley Model 9563 (9564)
- _____ (Specify Bradley color number).