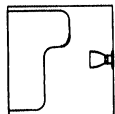


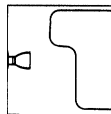
# SHOWER SEAT

- Barrier-Free Design
- Now with Microban® Antimicrobial Agent

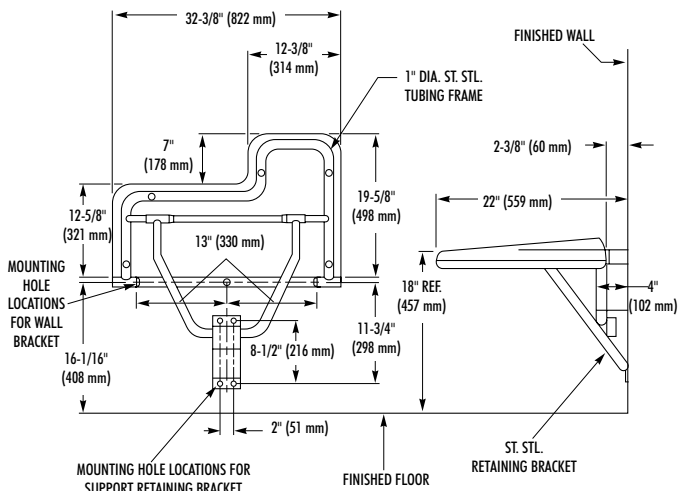
**Bradex™**



□ 956  
(Left Hand)



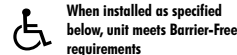
□ 9561  
(Right Hand)



Document No. 9010

This information is subject to change without formal notice.  
MD 3239-1198

# MODEL 956 9561



## CONSTRUCTION:

- **FRAME** fabricated of 1" dia. type 304 (18-8), 18 gauge stainless steel tubing. Heliarc welded.
- **WALL BRACKET** fabricated of 16 gauge stainless steel with stainless steel piano hinges.
- **RETAINING BRACKET** fabricated of 16 gauge stainless steel. Positive bullet-type catch holds seat securely in up or down position.
- **SEAT** of blow-molded polyethylene. Provides maximum comfort and flex without compromising strength. Will not retain heat or cold.

## OPERATION:

Hinged seat folds up and out of the way when not in use.

## INSTALLATION:

Provide concealed backing or anchors as specified by architect before finished wall is applied. Secure seat support bracket to wall with mounting screws (included) at holes provided. Locate mounting holes 16-1/16" above finished floor. Secure leg support bracket to wall at locations shown.

## GUIDE SPECIFICATION:

Folding shower seat shall be fabricated of molded polyethylene containing an antimicrobial agent homogeneously distributed throughout the plastic matrix. Seat secured to 1" diameter, 18 gauge stainless steel tubing. Support leg locks into 16 gauge retaining bracket with bullet-type catch.

Overall dimensions: 32-3/8"W x 22"D x 3-1/4" thick.

Folding Shower Seat shall be Bradley Model 956 (9561).

## MICROBAN ANTIMICROBIAL AGENT:

**PROBLEM:** Shower seats can be breeding grounds for odor and disease causing microorganisms — a real concern for any public facility, and a significant problem for health care facilities.

**SOLUTION:** The polyethylene plastic material in each Bradley 956 and 9561 seat now contains Microban, an antimicrobial agent which has been proven in hospital use, as well as in laboratory testing, to effectively inhibit the growth of a wide spectrum of microorganisms, including disease causing bacteria and fungi. Bradley seats will also stay fresh longer because the microorganisms that cause breakdown, odor, mold and mildew are inhibited from growth on the plastic. To provide maximum antimicrobial effectiveness for an extended period of years, the Microban antimicrobial agent is homogeneously blended into the seat's polyethylene material, prior to molding. The antimicrobial efficacy is not diminished by washing or scrubbing. Microban is EPA registered (# 42182-1) and is so gentle to human skin that in other hospital applications it is even used in topical soaps and lotions.