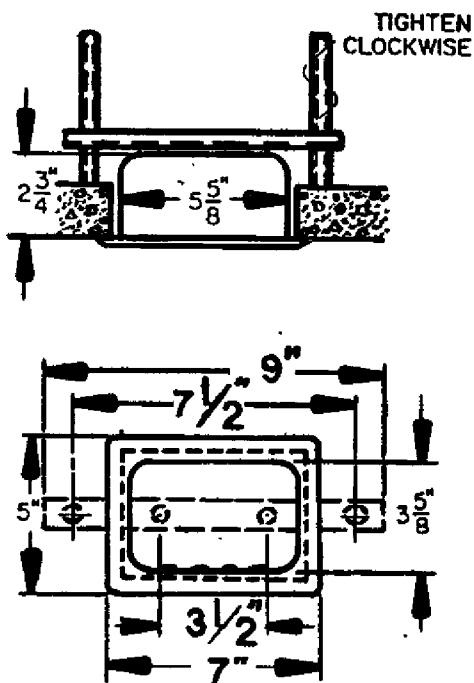
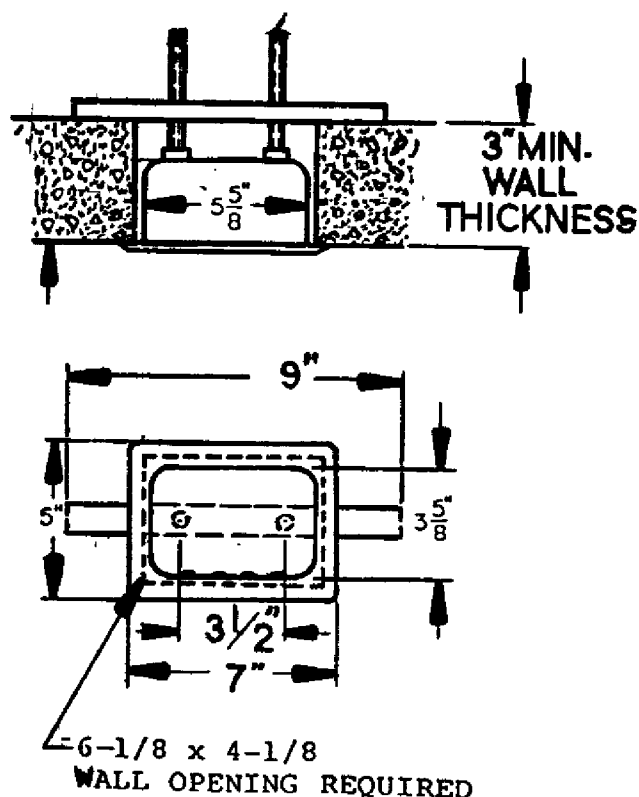


INSTALLATION INSTRUCTIONS MODEL SA16

ANCHORING METHOD FOR WALLS UP TO 2-3/4" THICK



ANCHORING METHOD FOR WALLS OVER 2-3/4" THICK



DIRECTIONS: Models for wall thickness up to 2-3/4 thick are furnished with a rustproofed steel bolted back plate. The back plate has two 1/2" rustproofed adjusting studs, which when turned clockwise, pull the rim snugly to the wall, permanently anchoring the assembly. Models for thicker walls are similar except the back plate is furnished with 1/4" full thread rustproofed studs and nuts which permanently anchor the assembly.

Distributed by
www.Ameraproducts.com
Phone: (800) 608-6568
Fax: (409) 840-5545
info@ameraproducts.com

Bradley
CORPORATION

7020 WEST PARKLAND CT.
MILWAUKEE WI 53223

WASHROOM
ACCESSORIES
DIVISION

P20-022

PAGE 1 OF 1