



Literature 200 series documents  
 C.O.I.S. TD 400 series documents  
 CSI 3 part 600 series documents

**C.O.I.S.**  
**Technical Data Sheet**

**CAD**  
**Operation**  
**Installation**  
**Specification**

Document #411  
 Issued 08-2007

MODEL  
 100SSV-R

Surface mount version-  
 See document #410

Stock item as of Sept. 07

**Document Index**

- Pg. 1 Coversheet
- Pg. 2 CAD Drawings
- Pg. 3-5 Install/CMW (Cleaning, Maintenance, Warranty)



**INSTALL FOR ADA COMPLIANCE (CAL UBC Title 24)**

**SIDE VIEW OPEN**

**- Max Protruding Objects**

- o 4.4.1
- o Unit does not exceed 4ö.

**- Forward Reach**

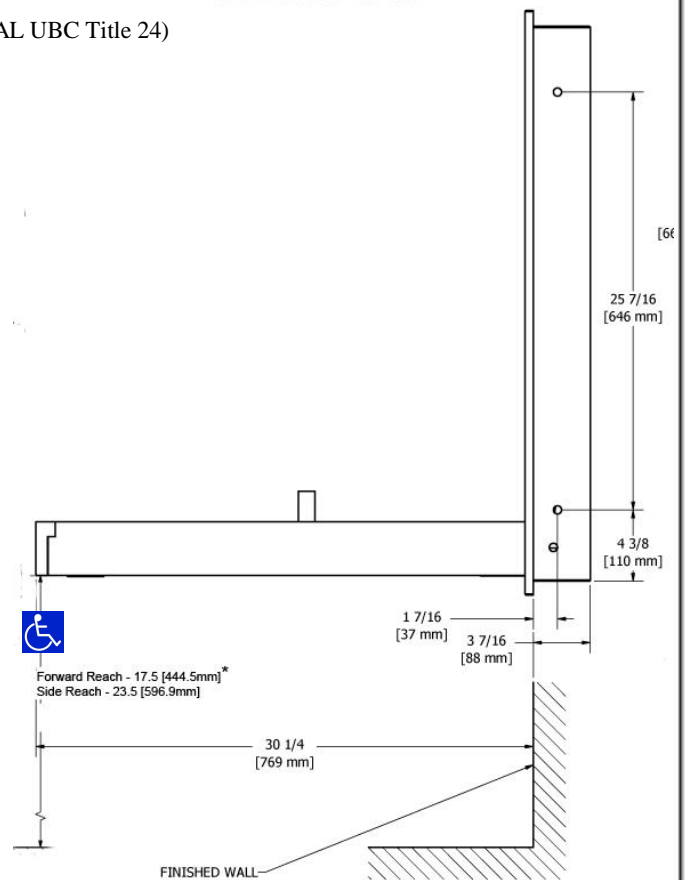
- o 4.2.5
- o Mount bottom of unit no higher than 17.5ö AFF.

**- Side Reach**

- o 4.2.6
- o Mount bottom of unit no higher than 23.5ö AFF.

**- Operations**

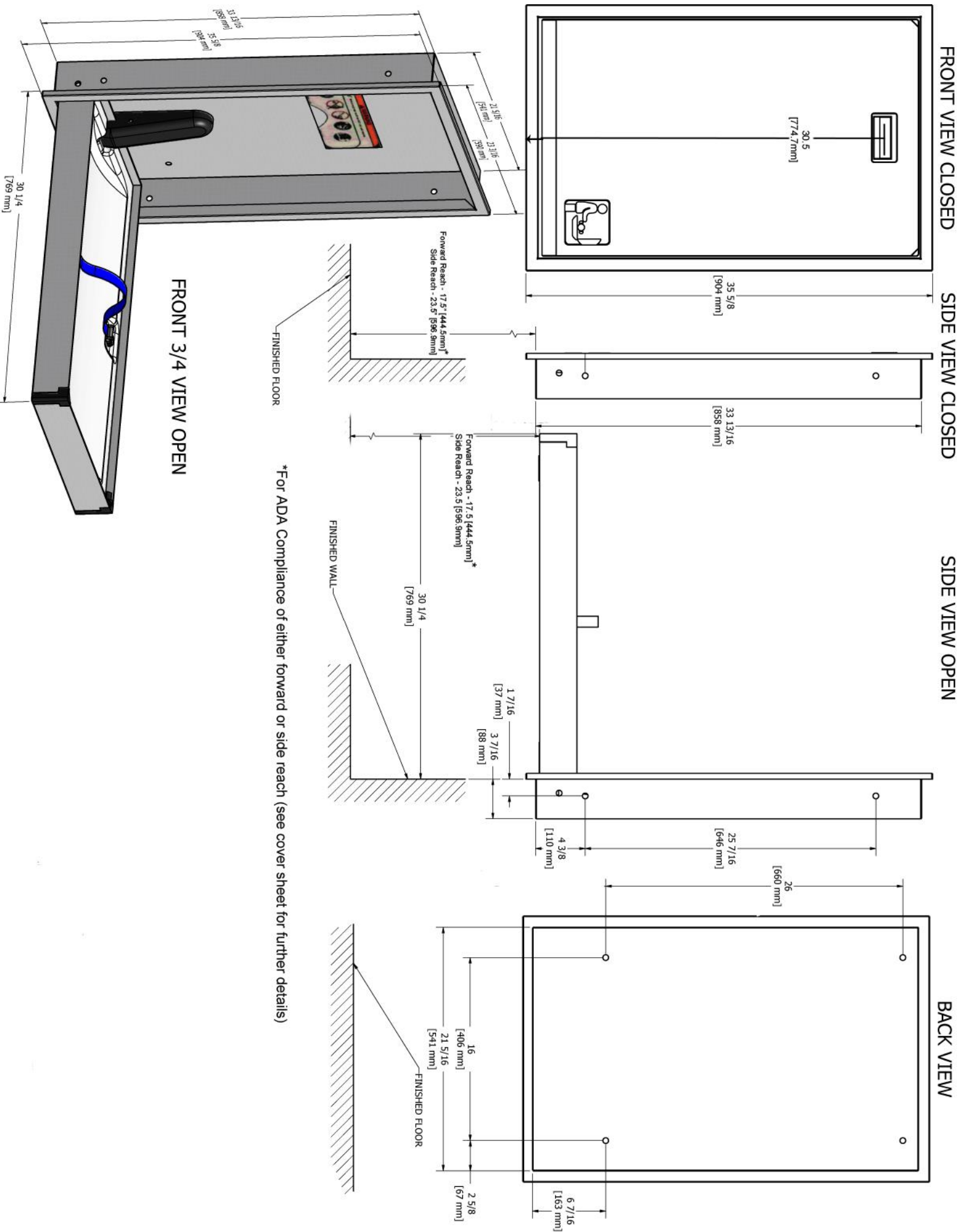
- o 4.27.4
- o Compliant



Also available as PDF



Stock item as of Sept. 07



## 100SSV-R

### Operation:

Concealed cylinder provides controlled, slow opening and closing of bed. No hinge structure exposed on interior or exterior surfaces. Changing surfaces resist odors and bacterial growth. Rated to hold child and accessories up to 50lbs. when properly installed.

*Warning:* Diaper changing stations are no stronger than the anchors or walls to which they are attached and, therefore, must be firmly secured in order to support the loads for which they are intended.

### CMW:

- **Cleaning-**  
Brocar polyethylene and stainless diaper changing stations should be cleaned with a soft cloth or sponge and a non-abrasive cleaner. Warm water or an organic solvent can be used. The preferred solvent is one that does not contain chlorine, such as acetone, methyl alcohol or mineral spirits. There are many compounded or blended organic cleaners commercially available to optimize attributes of both cleanliness and safety.
- **Inspection-**  
Safety strap: Inspect the buckle and strap for proper functioning as part of the facility's washroom cleaning schedule.

Closing cylinder: If the unit will not stay fully closed, the closing cylinder may need to be replaced.

Safety label: If the safety label is missing, restrict the unit from use by taping it closed as well as labeling the unit "inoperable" or removing it from the wall until a new label is installed.

Hinges, mounting hardware: Ensure that the hinges and mounting bolts are not loose by pulling the unit toward you and from side to side. If any play exists greater than 1/4" or 2.5mm in any direction, discontinue use of the unit by taping it closed or removing it from the wall, as well as, labeling the unit "inoperable." Contact professional maintenance personnel to diagnose and correct the problem.

- **Instructions For Use-**  
Information for product use is presented in the form of five graphic symbols within labeling adhered to each product. The symbols and color scheme design comply with ANSI Z535.4 Product Safety Signs & Labels, ANSI Z535.3 Criteria for Safety Symbols and ANSI Z535.1 Safety Color Code. As noted above, verification of this label's presence on the unit should be made as part of daily cleaning.

- **Warranty and Liability**  
 Product Liability Insurance      General Liability: \$1,000,000.    Excess liability \$10,000,000.

**Warranty**

Brocar Products, Incorporated warrants its products against defective material and manufacturing defects (but not improper use) for a period of five years after sale. Brocar Product's liability under this warranty shall be limited to the repair or replacement of the defective product. There shall be no other remedy available, including without limitation, recovery for incidental or consequential damages, injury to person, property, or any other incidental or consequential loss.

*The warranty described above shall be IN LIEU OF any other warranty, expressed or implied, including without limitation, any implied warranty of MERCHANTABILITY or fitness for a particular purpose.*

**Installation:**

The Unit has six recess mounting holes. Wood double stud blocking is necessary. See recommended blocking below or contact an architect and building official to make sure the blocking is adequate and complies with building codes.

**Recommended Blocking**

21 ¾ (553mm) x 34 ¼ (870mm)

**Recommended Mounting**

31 (788mm) height AFF (above finished floor)

**Drilling the Holes and Mounting the Station:**

1. Slide changer into blocking area. Mark mounting hole on locations on blocking studs.
2. Pre-drill holes marked in step 1 using a 3/16 drill bit.
3. Slide changer into blocking area again and shim for a snug fit. Fix the changer into the pre-drilled holes using a #10 x 3 (M6 x76mm) flat head wood screws. Make sure you have taken the operating clearance into consideration.

For all other substrate types, contact an architect or fastener (fixings) expert for installation fastener type.

Specifications:

Stainless Steel Diaper Changing Stations

1. Acceptable product: Brocar Products, Inc. Model 100SSV-R (recessed)
2. Characteristics:
  - a. Full body, brushed stainless steel, seamless welds
  - b. Provide Brocar Products SS-Flange in order to surface mount unit
  - c. Provide Brocar Products 200-SSLD stainless steel liner dispenser

Materials;

Entire body Type- brushed stainless steel. Full stainless steel frame and hinges provide maximum durability; equipped with a pneumatic cylinder. Unit features ABS tray liner; smooth concave changing area; nylon safety strap, and universal instruction graphics.