

COLORS & FINISHES - Air Louvers - Powder Coat Vision Lites, Louvers, Privacy Screen, & Door Edges

GENERAL:

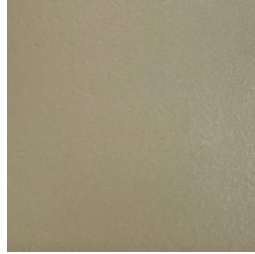
Air Louvers Door Lites & Louvers are painted using a VOC-free electrostatic painting process that causes the paint to be attracted to all exposed surface areas of the metal. This method yields a continuous coat of paint both inside and outside of the part providing excellent protection against moisture and dust, giving your product the longest lifespan possible.



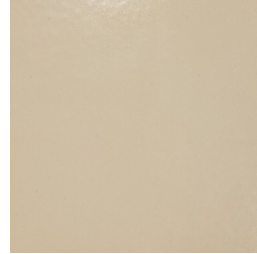
Bronze | B



AMS Beige | AB



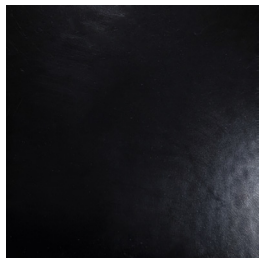
SC Beige | SB



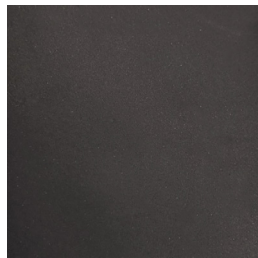
Sand | S



Brass | BA



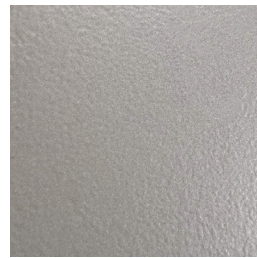
Black | BK



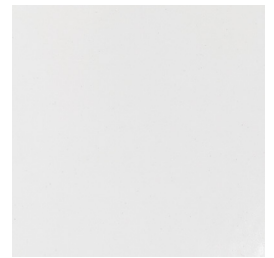
Flat Black | FB



Gray | G



Silver | SI



White | W

NOTES:

All powder coated Air Louvers products are available in these colors at no additional cost.

This document is for reference only. The colors depicted will be similar to the finished product but should not be used for color matching. Physical color samples are available by contacting customer service at 800-554-6077.

Most stocked warehouse items are either Bronze or Gray.



9702 Newton Ave S. Bloomington, MN 55431 | Many Locations Nationwide

© 2019 Activar Construction Products Group, Inc.

COLOR & FINISHES
Air Louvers Powder Coat

Distributed by
www.Ameraproducts.com
Phone: (800) 608-6568
Fax: (407) 840-3545
info@ameraproducts.com

NOV 15 2019